



LIMITED EDITION MAGAZINE

CITY OF TRACY

2025



Solid & Waste **RECYCLING**

Sustainable Tracy: Your Ultimate Guide to Solid Waste
and Recycling



CITY OF TRACY SOLID WASTE & RECYCLING

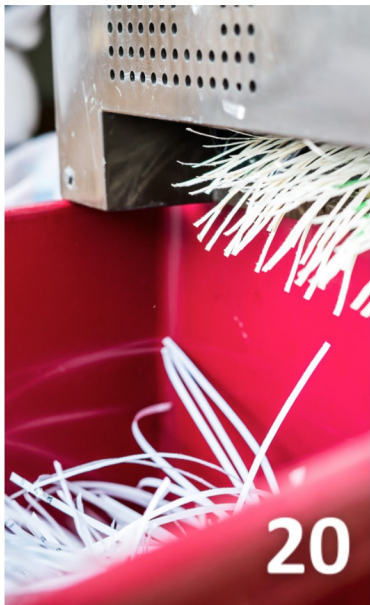
CONTENTS



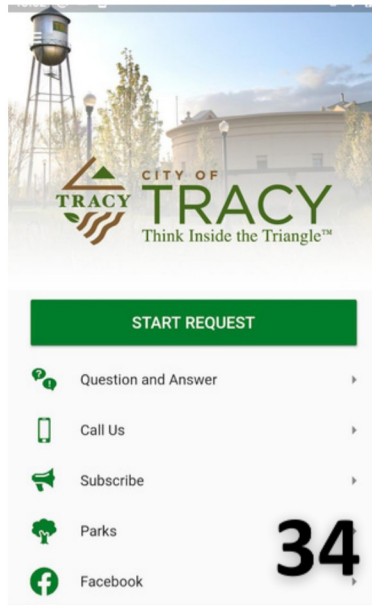
SOLID WASTE AND RECYCLING EVENTS



BATTERY DISPOSAL



DOCUMENT SHREDDING



SUBMIT A SERVICE REQUEST



www.RecycleInsideTheTriangle.com



520 Tracy Blvd., Tracy, CA 95376



(209) 831-6300



PublicWorks@CityOfTracy.org



- 2 DIRECTORY
- 3 WHO TO CALL: CITY SERVICES
- 4 WHO TO CALL: NON-CITY SERVICES
- 5 2025 SOLID WASTE & RECYCLING EVENTS
- 6 2025 RECYCLE CONTAINER PICK-UP SCHEDULE
- 7 STREET SWEEPING MAP
- 8 2025 STREET SWEEPING SCHEDULE
- 9 ORGANICS CONTAINER ITEMS
- 10 ORGANICS WASTE DISPOSAL TIPS
- 11 RECYCLE CONTAINER ITEMS
- 12 WASTE CONTAINER ITEMS
- 13 OOPS! TAG PROGRAM
- 14 COMPOSTABLE BAGS & TRASH CONTAINER CLEANING
- 15 WASTE COLLECTION APP INFORMATION
- 16 PLASTIC BAG RECYCLING
- 17 APPLIANCE DISPOSAL
- 18 ANNUAL RESIDENTIAL CLEAN-UP PROGRAM & TIRE RECYCLING
- 19 BATTERY DISPOSAL
- 20 DOCUMENT SHREDDING
- 21 ELECTRONIC WASTE (E-WASTE) RECYCLING
- 22 HOUSEHOLD HAZARDOUS WASTE (HHW) DISPOSAL
- 23 MEDICATION, SHARPS, & PAINT DISPOSAL
- 24 MATTRESS RECYCLING & OIL DISPOSAL
- 25 TREE RECYCLING & HOLIDAY LEAF PICK-UP
- 26 COMPOST GIVEAWAY
- 27 CITY GARAGE SALES
- 28 COMMUNITY BEAUTIFICATION PROGRAM
- 29 MAINTAIN-A-DRAIN PROGRAM
- 30 MASTER GARDENER PROGRAM
- 31 2025 UTILITY RATES
- 32 WATER CONSERVATION REBATES & INCENTIVES
- 33 ENVIRONMENTAL GUIDELINES
- 34 SUBMIT A SERVICE REQUEST

7:00 AM - 5:00 PM Monday - Thursday
7:00 AM - 4:00 PM Friday; Closed Alternating Fridays



DIRECTORY



City Resources

City Attorney's Office	333 Civic Center Plaza	(209) 831-6130
City Clerk's Office	(209) 831-6105
City Manager's Office	(209) 831-6115
Development Services	(209) 831-6400
Economic Development	(209) 831-6490
Finance	(209) 831-6800
Fire Department Administration	835 Central Avenue	(209) 831-6700
Community Risk Reduction	(209) 831-6707
Grand Theatre	715 N. Central Avenue	(209) 831-6858
Human Resources	333 Civic Center Plaza	(209) 831-6150
Mobility and Housing	(209) 831-6022
Public Works		
Operations/Boyd Service Center	520 Tracy Blvd.	(209) 831-6300
Utilities	3900 Holly Drive	(209) 831-6330
TRACER/Transportation	50 E. 6th Street	(209) 831-4287
Tracy Municipal Airport	5749 S. Tracy Blvd.	(209) 831-5215
Parks & Recreation	333 Civic Center Plaza	(209) 831-6200
Library	20 E. Eaton Avenue	(209) 937-8221
Lolly Hansen Senior Center	375 E. 9th Street	(209) 831-6240
Police Department	1000 Civic Center Drive	(209) 831-6550
Abandoned Vehicles	(209) 831-6554
Animal Shelter	2735 Paradise Road	(209) 831-6364
Code Enforcement	1000 Civic Center Drive	(209) 831-6410
Crime Stoppers	(209) 831-6847
Evidence and Property	(209) 831-6694
Graffiti Hotline	(209) 831-6583
Neighborhood Watch	(209) 831-6990
Non-Emergency	(209) 831-6550
Records	(209) 831-6560

Waste Hauler and Transfer Facility

30703 S. MacArthur Drive, Tracy, CA 95377

Tracy Disposal	(209) 835-0601
Tracy Material Recovery Facility (MRF).....	(209) 832-2355

San Joaquin (SJ) County Resources

SJ County Public Works	(209) 468-3000
SJ County Solid Waste	(209) 468-3066

State Resources

CalRecycle	(800) RECYCLE
Caltrans	(916) 654-5266

Other Resources

California Highway Patrol	(209) 319-4300
"Call Before You Dig" USA North	811 or (800) 642-2444
PG&E	(800) 743-5000
Union Pacific Railroad	(888) 870-8777



Who to Call

FREQUENTLY REQUESTED CITY SERVICES



OPERATIONS

(209) 831-6300

- City Trees
- Graffiti Removal on City Property
- Solid Waste and Recycling
- Street Lights and Traffic Signals
- Streets and Sidewalks
- Water Line and Sewer Line Maintenance



FINANCE

(209) 831-6800

- Business License
- Low-Income Rate Assistance (LIRA)
- Online Customer Portal
- Sign Up, Change, and Cancel Utility Services
- Utility Billing
- Utility Payment Assistance



TRACY DISPOSAL (TD) AND TRACY MATERIAL RECOVERY FACILITY (MRF)

TD (209) 835-0601
MRF (209) 832-2355

- Compost
- Holiday Tree Recycling
- Leaf Pick-Up Program
- Mattress Recycling Program
- Missed Waste Pick-Up
- Schedule Annual Residential Clean-Up and/or Appliance Pick-Up
- Special Handling for Disabled Customers

UTILITIES

(209) 831-6330

- Wastewater Treatment Plant
- Water Conservation and Efficiency Rebates
- Water Management
- Water Treatment Plant

PARKS AND RECREATION

(209) 831-6200

- Channelway and City Landscape
- Facility Rentals
- Park Amenities
- Park Landscape
- Recreation Programs

DEVELOPMENT SERVICES

(209) 831-6400

- Building Inspections
- Building Permits
- Capital Improvement Projects (CIPs)
- Plan Review
- Residential, Commercial, and Industrial Development

Code Enforcement

(209) 831-6410

Risk Management

(209) 831-6150

Operations - After Hours/ Police Non-Emergency

(209) 831-6550



Who to Call

NON-CITY SERVICES



CALTRANS

(916) 654-5266

Maintain Freeways and Highways, Including:

- Broken or Missing Signs
- Graffiti and Litter
- Interstate On and Off Ramps
- Lines and Markers
- Potholes



UNION PACIFIC RAILROAD

(888) 870-8777

Emergencies -

(888) 877-7267

- Blocked Railroad Crossing
- Illegal Dumping and Transient Encampments on Railroad Property



PG&E

(800) 743-5000

Emergencies -

(800) 743-5000

- Downed Power Lines
- Report an Outage
- Smell Natural Gas

SAN JOAQUIN COUNTY PUBLIC WORKS

1810 E. Hazelton Avenue
Stockton, CA 95205

(209) 468-3000

- Bridge Engineering
- County Channelway Maintenance
- County Road Closure
- Roadway Maintenance Outside of City Limits

SAN JOAQUIN COUNTY SOLID WASTE

1810 E. Hazelton Avenue
Stockton, CA 95205

(209) 468-3066

- Hazardous Household Waste Facility
- Lovelace Material Recovery Facility and Transfer Station
- Master Gardener Program
- North County and Foothill Landfills
- Unincorporated County Residential Refuse Collection

CALIFORNIA HIGHWAY PATROL

1175 E. Pescadero Avenue
Tracy, CA 95304

(209) 319-4300

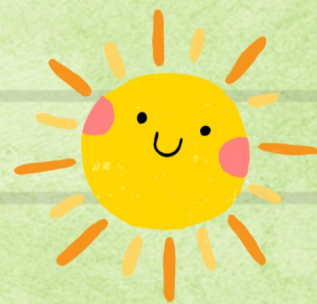
- State Interstates/Routes and Roadways in the Unincorporated Areas of San Joaquin County
- Traffic Enforcement



SOLID WASTE & RECYCLING EVENTS 2025

www.RecycleInsideTheTriangle.com

All events occur rain or shine!



JANUARY

SAT
11

E- Waste



MARCH

SAT
29

Community Clean-Up
Register by 3/21



APRIL

SAT
12

E-Waste



SAT
19

Document Shredding



SAT
26

West Side Garage Sale
Register by 4/11

SALE

MAY

SAT
3

Household Hazardous Waste



FRI/SAT
9-10

Compost Giveaway



JUNE

SAT
21

Community Clean-Up
Register by 6/13



JULY

SAT
12

E-Waste



SAT
19

Document Shredding



AUGUST

FRI/SAT
15-16

Compost Giveaway



SEPTEMBER

SAT
13

Community Clean-Up
Register by 9/05



SAT
27

East Side Garage Sale
Register by 9/12

SALE

OCTOBER

FRI/SAT
3-4

Compost Giveaway



SAT
11

E-Waste





NOVEMBER



SAT
1

Document Shredding



2025 RECYCLE CONTAINER PICK-UP SCHEDULE

 West Side Recycle Pick-Up
 East Side Recycle Pick-Up

 No Garbage Service
 (Service Delayed One Day the Remainder of the Week)
 City Offices Closed

JANUARY						
S	M	T	W	T	F	S
			1	2	3	4
5	6	7	8	9	10	11
12	13	14	15	16	17	18
19	20	21	22	23	24	25
26	27	28	29	30	31	

FEBRUARY						
S	M	T	W	T	F	S
						1
2	3	4	5	6	7	8
9	10	11	12	13	14	15
16	17	18	19	20	21	22
23	24	25	26	27	28	

MARCH						
S	M	T	W	T	F	S
						1
2	3	4	5	6	7	8
9	10	11	12	13	14	15
16	17	18	19	20	21	22
23	24	25	26	27	28	29
30	31					

APRIL						
S	M	T	W	T	F	S
		1	2	3	4	5
6	7	8	9	10	11	12
13	14	15	16	17	18	19
20	21	22	23	24	25	26
27	28	29	30			

MAY						
S	M	T	W	T	F	S
				1	2	3
4	5	6	7	8	9	10
11	12	13	14	15	16	17
18	19	20	21	22	23	24
25	26	27	28	29	30	31

JUNE						
S	M	T	W	T	F	S
1	2	3	4	5	6	7
8	9	10	11	12	13	14
15	16	17	18	19	20	21
22	23	24	25	26	27	28
29	30					

JULY						
S	M	T	W	T	F	S
		1	2	3	4	5
6	7	8	9	10	11	12
13	14	15	16	17	18	19
20	21	22	23	24	25	26
27	28	29	30	31		

AUGUST						
S	M	T	W	T	F	S
					1	2
3	4	5	6	7	8	9
10	11	12	13	14	15	16
17	18	19	20	21	22	23
24	25	26	27	28	29	30
31						

SEPTEMBER						
S	M	T	W	T	F	S
	1	2	3	4	5	6
7	8	9	10	11	12	13
14	15	16	17	18	19	20
21	22	23	24	25	26	27
28	29	30				

OCTOBER						
S	M	T	W	T	F	S
			1	2	3	4
5	6	7	8	9	10	11
12	13	14	15	16	17	18
19	20	21	22	23	24	25
26	27	28	29	30	31	

NOVEMBER						
S	M	T	W	T	F	S
						1
2	3	4	5	6	7	8
9	10	11	12	13	14	15
16	17	18	19	20	21	22
23	24	25	26	27	28	29
30						

DECEMBER						
S	M	T	W	T	F	S
	1	2	3	4	5	6
7	8	9	10	11	12	13
14	15	16	17	18	19	20
21	22	23	24	25	26	27
28	29	30	31			

STREET SWEEPING MAP

➔ Finding Your Zone and Sweep Day

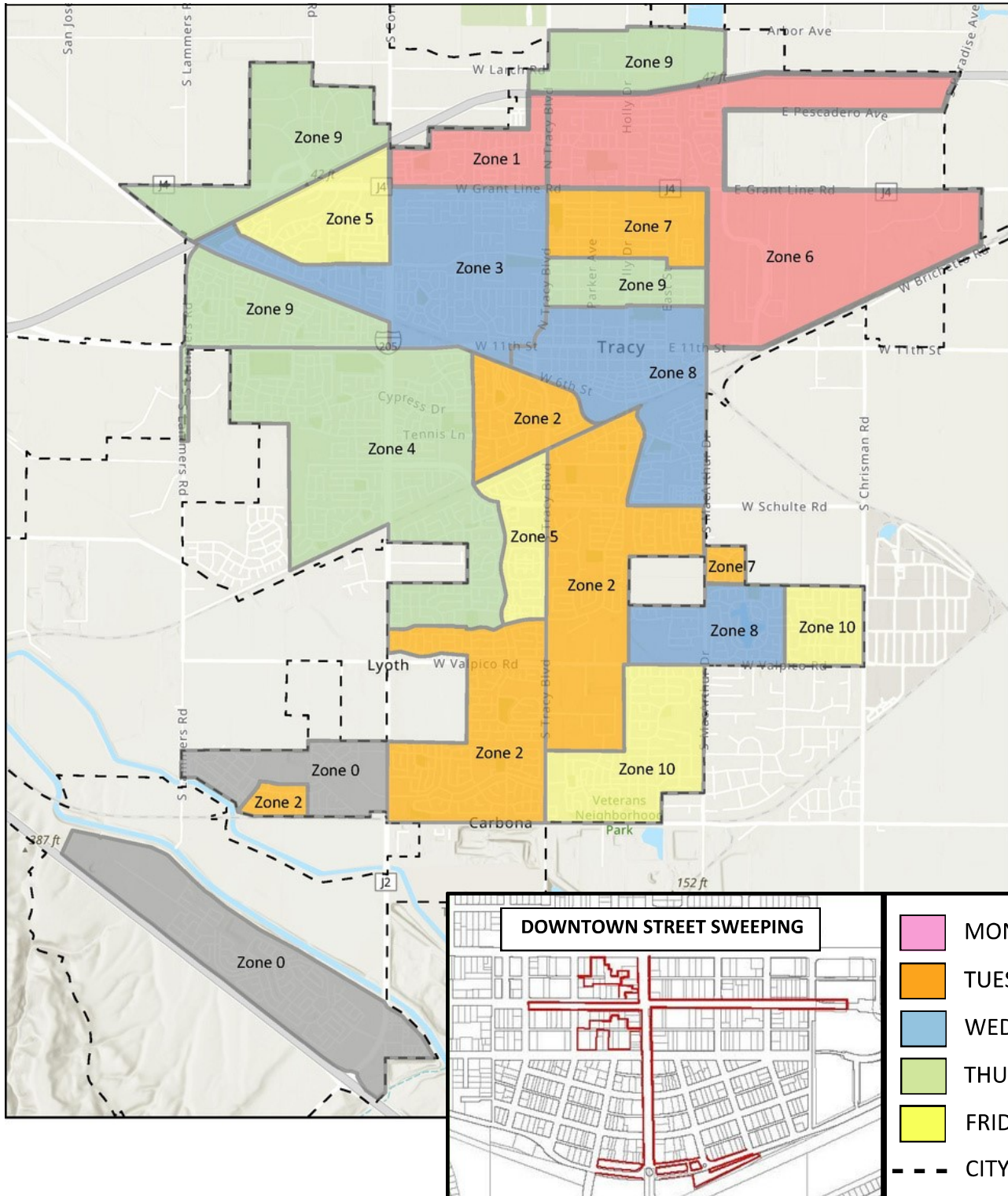
Street Sweeping occurs on the day after your waste pick-up on the same week that your recycle bin is collected.

To improve effectiveness, the City asks that you park your cars off the street on your scheduled sweeping day. Basketball hoops should also be moved off the street. **The street sweeper does not pick up leaves.** You must put them in your organics bin for disposal.

Match your street to the numbered area on the map. Use the calendar to find the color and zone number. This is your street sweeping day.

Or

Go to our website or use the QR code (located at the top of the calendar) to enter your address to find out your street sweeping day.





2025 STREET SWEEPING SCHEDULE



JANUARY						
S	M	T	W	T	F	S
			1	2	3	4
			3	4	5	
5	6	7	8	9	10	11
	6	7	8	9	10	
12	13	14	15	16	17	18
	1	2	3	4	5	
19	20	21	22	23	24	25
	6	7	8	9	10	
26	27	28	29	30	31	
	1	2	3	4	5	

FEBRUARY						
S	M	T	W	T	F	S
						1
2	3	4	5	6	7	8
	6	7	8	9	10	
9	10	11	12	13	14	15
	1	2	3	4	5	
16	17	18	19	20	21	22
	6	7	8	9	10	
23	24	25	26	27	28	
	1	2	3	4	5	

MARCH						
S	M	T	W	T	F	S
						1
2	3	4	5	6	7	8
	6	7	8	9	10	
9	10	11	12	13	14	15
	1	2	3	4	5	
16	17	18	19	20	21	22
	6	7	8	9	10	
23	24	25	26	27	28	29
	1	2	3	4	5	
30	31					
	6					

APRIL						
S	M	T	W	T	F	S
		1	2	3	4	5
		7	8	9	10	
6	7	8	9	10	11	12
	1	2	3	4	5	
13	14	15	16	17	18	19
	6	7	8	9	10	
20	21	22	23	24	25	26
	1	2	3	4	5	
27	28	29	30			
	6	7	8			

MAY						
S	M	T	W	T	F	S
				1	2	3
				9	10	
4	5	6	7	8	9	10
	1	2	3	4	5	
11	12	13	14	15	16	17
	6	7	8	9	10	
18	19	20	21	22	23	24
	1	2	3	4	5	
25	26	27	28	29	30	31
	6	7	8	9	10	

JUNE						
S	M	T	W	T	F	S
1	2	3	4	5	6	7
	1	2	3	4	5	
8	9	10	11	12	13	14
	6	7	8	9	10	
15	16	17	18	19	20	21
	1	2	3	4	5	
22	23	24	25	26	27	28
	6	7	8	9	10	
29	30					
	1					

JULY						
S	M	T	W	T	F	S
		1	2	3	4	5
		2	3	4	5	
6	7	8	9	10	11	12
	6	7	8	9	10	
13	14	15	16	17	18	19
	1	2	3	4	5	
20	21	22	23	24	25	26
	6	7	8	9	10	
27	28	29	30	31		
	1	2	3	4		

AUGUST						
S	M	T	W	T	F	S
					1	2
					5	
3	4	5	6	7	8	9
	6	7	8	9	10	
10	11	12	13	14	15	16
	1	2	3	4	5	
17	18	19	20	21	22	23
	6	7	8	9	10	
24	25	26	27	28	29	30
	1	2	3	4	5	
31						

SEPTEMBER						
S	M	T	W	T	F	S
	1	2	3	4	5	6
	6	7	8	9	10	
7	8	9	10	11	12	13
	1	2	3	4	5	
14	15	16	17	18	19	20
	6	7	8	9	10	
21	22	23	24	25	26	27
	1	2	3	4	5	
28	29	30				
	6	7				

OCTOBER						
S	M	T	W	T	F	S
			1	2	3	4
			8	9	10	
5	6	7	8	9	10	11
	1	2	3	4	5	
12	13	14	15	16	17	18
	6	7	8	9	10	
19	20	21	22	23	24	25
	1	2	3	4	5	
26	27	28	29	30	31	
	6	7	8	9	10	

NOVEMBER						
S	M	T	W	T	F	S
						1
2	3	4	5	6	7	8
	1	2	3	4	5	
9	10	11	12	13	14	15
	6	7	8	9	10	
16	17	18	19	20	21	22
	1	2	3	4	5	
23	24	25	26	27	28	29
	6	7	8	9	10	
30						

DECEMBER						
S	M	T	W	T	F	S
	1	2	3	4	5	6
	1	2	3	4	5	
7	8	9	10	11	12	13
	6	7	8	9	10	
14	15	16	17	18	19	20
	1	2	3	4	5	
21	22	23	24	25	26	27
	6	7	8	9	10	
28	29	30	31			
	1	2	3			

WHAT BELONGS IN THE ORGANICS CONTAINER?



PAPER BAGS ARE THE ONLY TYPE OF BAGS ALLOWED IN THE ORGANICS CONTAINER.



ACCEPTED MATERIALS

- Bones
- Branches*
- Bread
- Dairy
- Eggshells
- Flowers
- Food Soiled Cardboard
- Food Soiled Paper Products
- Food Waste
- Fruit
- Grass Clippings
- Leaves
- Meat
- Napkins
- Paper Plates
- Paper Towels
- Plate Scrapings
- Vegetables
- Yard Trimmings

*Branches must be less than six inches in diameter and less than three feet in length.



NOT ALLOWED

- Biodegradable/Compostable Bags
- Burn Material
- Chemicals/Liquids (Fertilizer, Gas, Oil, Water, Etc.)
- Coated or Painted Wood
- Concrete, Gravel, Rocks
- Deceased Animals
- Dirt
- Hazardous Waste
- Hot Ashes or Coals
- Metal
- Oleanders
- Palm Fronds
- Pet Waste
- Plastic Bags
- Poison Ivy/Poison Oak
- Wax Coated Paper Products
- Wood from Construction Projects





ORGANICS WASTE DISPOSAL TIPS

**KITCHEN FOOD SCRAP PAILS ARE AVAILABLE TO RESIDENTS, UPON REQUEST; ONE PER HOUSEHOLD. PICK-UP AT BOYD SERVICE CENTER
520 TRACY BLVD., TRACY.
(209) 831-6300**



Below are some quick and easy eco-friendly tips to help reduce odors and insects in your organics waste container.



Using a paper bag, paper towels, napkins, or newspaper is a great way to prevent food scraps from sticking in the container.



Mixing yard waste with food scraps in a container can help absorb excess moisture and prevent the food from sticking.



Store food scraps in a container in either the refrigerator or freezer until the night before your scheduled pick up.



Baking soda is a powerful odor absorber that can effectively eliminate unpleasant odors.



Repel ants, fruit flies, and other pests by spraying vinegar directly into the container or on food scraps.



Give your container a quick rinse with water to wash away any debris. Make sure to do this in landscaped areas.



It is important to keep the lid of the container closed to avoid pests from entering and to minimize unpleasant odors.

WHAT BELONGS IN THE RECYCLE CONTAINER?



PLEASE SCRAPE AND RINSE ITEMS BEFORE PLACING IN THE RECYCLE CONTAINER. NO PLASTIC BAGS.



ACCEPTED MATERIALS

- Cans (Aluminum, Steel, and Tin)
- Catalogs
- Clean Aluminum Foil and Trays
- Clean Corrugated Cardboard
- Clean Paper Bags
- Envelopes
- Glass Bottles and Jars
- Ledger Paper
- Newspapers
- Plastic Bottles and Jugs
- Printer Paper
- Shoe Boxes
- Wrapping Paper Without Foil



NOT ALLOWED

- Aerosol Cans
- Batteries
- Chemicals/Liquids (Fertilizer, Gas, Oil, Water, Etc.)
- Dead Animals
- Dirt
- Electronic Waste
- Hazardous Waste
- Hot Ashes or Coals
- Light Bulbs
- Packing Peanuts
- Plastic Bags
- Polystyrene
- Rocks
- Styrofoam



WHAT BELONGS IN THE WASTE CONTAINER?



PLEASE BAG PET WASTE.



COMMON ITEMS

- Bagged Pet Waste
- Clothing*
- Cups
- Diapers
- Hangers
- Kitchen Plates
- Plastic Bags**
- Plastic Wrap
- Rugs
- Shoes*
- Sponges
- Tempered Glass

*Consider donating these items before putting them in the waste container.

**Some stores accept plastic bags for recycling (see page 22).



NOT ALLOWED

- Household Hazardous Waste
 - Batteries
 - Chemicals
 - Electronic Waste
 - Hazardous Waste
 - Lightbulbs
 - Paint
 - Universal Waste



OOPS! TAG PROGRAM

On your waste collection day, you may receive an “OOPS!” tag if you have items that were not placed in the correct container(s) or were not serviceable for other reasons.

Tags for garbage, organics waste, and/or recycling are given out as a reminder that there is an issue with your container(s) such as:

- Container was not out when the truck arrived.
- Container was too heavy or overloaded.
- Contains Special Handling Materials:
 - Batteries
 - Electronic Waste (E-Waste)
 - Hazardous Materials
 - Light Bulbs
 - Motor Oil
 - Paint
 - Sharps
 - Tires
- Contamination.
- Prohibited materials: Please refer to the checklist on the tag for items that are not allowed in the identified container.
- Reminder to position cart with wheels near the curb, without blocking the gutter, and the handle facing your house.
- Waste scattered before the truck arrived.
- Waste containers are to be placed three feet apart from each other and six feet from any vehicle or obstacle.
- Handles are to be facing the house with the wheels spaced at least one foot from the curb.
- Once emptied, containers are to be removed from the curbside within 24 hours after pickup and placed behind a gate or at the side of the garage.
- Keep lids tightly closed to limit access by insects and animals, and keep contents from being blown out of the containers (Tracy Municipal Code 5.20.100 b-d).

Please refer to the back side of the notice, or on pages 9-12 of this magazine, for details on what is acceptable in each container and how to get placed on the collection schedule once the contaminates are removed.

Tracy Disposal
30703 South MacArthur Drive
Tracy, CA 95377
(209) 835-0601
www.tdswm.com



COMPOSTABLE BAGS

Composting is an important practice that helps reduce waste and create nutrient-rich soil for plants and gardens. However, one common misconception is that all biodegradable or compostable bags can be used to collect organic waste and then be thrown in the organics container. In reality, neither biodegradable nor compostable bags are accepted in organic waste containers because they do not break down properly and can contaminate the compost.

Compostable bags are designed to break down in industrial composting facilities, which run at higher temperatures and have special conditions to break down the materials. When compostable bags are added to home compost bins or municipal composting programs, they do not break down as intended and can interfere with the composting process. This can result in incomplete decomposition and contamination of the compost with plastic particles.

To ensure that your organic waste is properly composted, it is important to avoid using biodegradable or compostable bags and instead opt for more suitable options. Acceptable replacements for biodegradable and compostable bags include paper bags, napkins, newspaper, paper plates, and paper towels. These materials will break down easily in the composting process and can be safely added to organic waste containers.

If you prefer not to use any bags at all, another alternative is to simply rinse out your organics container over landscaped areas. This will help keep your organics container clean and prevent any odors from building up. Additionally, it is a sustainable way to dispose of food scraps without the need for disposable bags.

By understanding the limitations of biodegradable and compostable bags and choosing more appropriate alternatives, you can help ensure that your organic waste is composted effectively and without any contamination. Making small changes in how you collect and dispose of organic waste can have a positive impact on the environment and contribute to a more sustainable future.

TRASH BIN CLEANING SERVICE

Tracy Disposal offers a cleaning service for waste containers. City of Tracy Utility customers may call Tracy Disposal to schedule their steam cleaning service (\$50 per waste container). For more information, call Tracy Disposal at (209) 835-0601.





WASTE COLLECTION APP

Info Page

DISPOSING WASTE THE RIGHT WAY

Collection App

Tracy Disposal and the City of Tracy present the Collection App, which is now available on both the Apple and Android Stores. This handy app has plenty of features to help you with all of your solid waste needs.

Waste Wizard

This online tool helps you quickly determine which container an item belongs in. Type the name of a waste item to find out how to recycle or dispose of it.

Collection Calendar

Subscribe to receive collection day reminders via email, text message, mobile app notification, or automated phone call.

Waste Sorting Game

Players sort materials and learn the fundamentals of our Waste and Recycling program. After completion of each level, players get rewarded with items to construct a virtual park.



**SOLID WASTE AND
RECYCLING DIVISION**

**520 Tracy Blvd.
Tracy, CA 95376**

(209) 831-6300
www.RecycleInsideTheTriangle.com



PLASTIC BAG RECYCLING

Curbside recycling does not accept plastic bags. However, several stores throughout the City have taken a proactive approach by providing recycling containers for residents to properly dispose of plastic bags and other flexible plastics. Many of these drop-off locations are conveniently located just inside the entrance of the building. Accepted items include: bread bags, grocery bags, produce bags, some cereal bags, some plastic mailers, some plastic wraps, and more.

The bags must be clean and dry to ensure an effective and efficient recycling process. Bags are recycled into other plastic bags or made into synthetic lumber for decks or benches.

By recycling plastic bags, residents can play their part in protecting marine ecosystems and reducing harm to marine life. Marine animals often mistake plastic bags for food, leading to ingestion of harmful materials and potential entanglement.

We encourage residents to make conscious choices to promote a cleaner environment. By reusing or properly recycling plastic bags, individuals contribute to the larger goal of minimizing pollution and preserving natural resources.

Drop-Off Locations

- *FoodMaxx* - 1950 West 11th Street
(209) 832-3867
- *Savemart* - 875 South Tracy Blvd.
(209) 830-2840
- *Safeway* - 1801 West 11th Street
(209) 830-2950
- *Target* - 2800 Naglee Road
(209) 833-3494
- *Walmart* - 3010 West Grant Line Road
(209) 836-5786
- *Winco Foods* - 2850 Pavillion Parkway
(209) 833-7454

APPLIANCE DISPOSAL



City of Tracy residents with the three-container waste collection program who receive Utility services through the City of Tracy are allowed to dispose of two large appliances per calendar year at no charge.

Residents must either take these items to the Tracy Material Recovery Facility (full voucher must be presented to be valid), or contact Tracy Disposal at (209) 835-0601 if pick-up service is needed.

The Tracy Material Recovery Facility is located at 30703 S. MacArthur Drive, Tracy. The facility is open Monday through Friday from 8:00 AM to 4:00 PM, Saturday from 8:00 AM to 3:30 PM, and is closed on Sundays. Identification is required.



Voucher available at
www.RecycleInsideTheTriangle.com
or scan code below

➔ Accepted Items

- Air Conditioner
- Dishwasher
- Dryer
- Freezer
- Oven
- Refrigerator
- Stove
- Swamp Cooler
- Trash Compactor
- Washer
- Water Cooler*
- Water Dispenser*
- Water Heater
- Water Softener



*Accepted only if specified items contain Freon.



ANNUAL RESIDENTIAL CLEAN-UP PROGRAM

The City of Tracy offers an annual residential clean-up program which allows one free scheduled pick-up of extra items per calendar year.

This service is available to residents with the three-container waste collection program who receive Utility services through the City of Tracy.

The Utility services account must be active and current (i.e. no past due amounts) to schedule the annual pick-up.

Items residents can place out for collection are:

- Ten 32-gallon trash bags or equivalent of garbage AND
- Two items of furniture such as: appliances, mattress sets, sofas, or any combination of any two large furniture items.

The pick-up must be scheduled prior to placing any items at the curb. All bags, bundles, and furniture must be placed neatly at the curbside, not blocking the gutter or sidewalk. **An appointment is required and must be made in advance.** Same day appointments are not possible.

Ready to schedule?

Call Tracy Disposal at (209) 835-0601 to schedule your annual pick-up. Let them know what you will be putting out for collection so they can send the appropriate collection vehicle. Contain loose items in bags and tie carpet in rolls no longer than four feet. Place your items at the curb no more than 24 hours before the scheduled appointment.

TIRE RECYCLING



In San Joaquin County and throughout the State of California, recycling used tires keeps this valuable resource out of our landfills. On average, there is one used tire generated for every person, every year. In the state of California, this amounts to over 35 million used tires annually. In San Joaquin County, this equates to about 700,000 used tires; with the typical weight of a tire at 20 pounds, an estimated 7,000 tons can be diverted from our landfills annually through recycling used tires. Recycled tires can be used to create rubber bark for gardens and playgrounds, rubber asphalt for city streets and sidewalks, and various other products such as floor mats.

San Joaquin County residents can bring up to four used tires at no charge (restrictions apply) to any County-owned solid waste facility for proper disposal (listed below).

Lovelace MRF and Transfer Station
2323 E. Lovelace Road, Manteca, CA 95336
(209) 982-5770

North County Recycling Center and Sanitary Landfill
17720 E. Harney Land, Lodi, CA 95240
(209) 887-3868

Foothill Sanitary Landfill
6484 N. Waverly Road, Linden 95236
(209) 887-3969

For more information, please visit: www.sjcrecycle.org, or you can call the San Joaquin County Solid Waste Division (209) 468-3066.



BATTERY DISPOSAL

The City of Tracy's Solid Waste and Recycling Division would like to remind the public that batteries are considered universal waste and **cannot be disposed of in the regular garbage**. They must be recycled to protect the environment.

The City provides a battery recycling program that offers the public an easy and flexible way to recycle batteries and handheld portable electronic devices. The battery recycling boxes are provided at designated locations around Tracy to keep these items from being sent to the landfill. Drop-off is always free!

What goes into these battery recycling boxes? All batteries that are clearly marked as alkaline, nickel cadmium (Ni-Cd), and nickel metal hydride (NiMH) can be placed in the battery recycling box loosely. Corroded batteries need to be placed into a clear, resealable plastic bag before putting them into the battery recycling box.

Solar, rechargeable, lithium ion, and any unidentifiable batteries need to be individually bagged in a clear resealable plastic bag to prevent terminals from touching, which could cause a fire.

Cellular phones, pagers, and wireless handheld communication devices that are designed to operate on battery power may also be placed in the battery recycling box.

➔ Drop-Off Locations

- Animal Shelter - 2735 Paradise Road
- City Hall - 333 Civic Center Plaza
- Fire Administration - 835 Central Avenue
- Fire Station 91 - 1701 W. 11th Street
- Fire Station 92 - 1035 E. Grant Line Road
- Fire Station 93 - 1400 W. Durham Ferry Road
- Fire Station 94 - 16502 W. Schulte Road
- Fire Station 95 - 7151 Tracy Hills Drive
- Fire Station 96 - 1800 W. Grant Line Road
- Fire Station 97 - 595 W. Central Avenue
- Library - 20 E. Eaton Avenue
- Lolly Hansen Senior Center - 375 E. 9th Street
- Operations Division - 520 Tracy Blvd. - Gate 3
- Police Department - 1000 Civic Center Drive
- Tracy Disposal Office - 30703 S. MacArthur Drive
- Tracy Material Recovery Facility (MRF) - 30703 S. MacArthur Drive

Note: Any retailers that sell rechargeable batteries and/or cell phones are required to take them back from consumers (you don't have to be a customer).



DOCUMENT SHREDDING

Visit www.RecycleInsideTheTriangle.com for
dates and times.

The City of Tracy offers free document shredding events to residents. These events have trucks that shred materials onsite, so there is never any risk of your personal information being seen by anyone. Residents are limited to three banker boxes or equivalent.

Accepted items:

- Books*
- Folders, including ones with clasps
- Magazines
- Papers
- Papers with paper clips and staples

Items Not Accepted:

- Binder Clips
- Cassette Tapes
- CDs
- Floppy Disks
- Three Ring Binders
- VHS Tapes
- X-Rays

*Consider donating or check with the local library first to see if they will accept the books.

➔ Accepted Items

- Answering Machines
- CD Players
- Cell Phones
- Copiers
- Desktop Computers
- Digital Cameras
- DVD Players
- Electronic Cables
- Fax Machines
- Hard Drives
- Holiday Light Strands
- Keyboards/Mice
- Laptop Computers
- Microwaves
- Modems/Routers
- Network Equipment
- Power/Extension Cords
- Printers
- Radios
- Scanners
- Servers
- Stereos
- Tablets
- Telecom Equipment
- Telephones
- Televisions/Monitors:
 - CRT, DLP, LCD, LED, Plasma, and Rear Projection
- VCRs
- Video Game Consoles

➔ Unaccepted Items

- All Wood, Including Wood Encased Electronics
- Ballasts/Capacitors
- Battery Powered Consumer Products (Power Tools, Toothbrushes, Toys, Etc.)
- Cardboard
- Contaminated E-Waste (Medical Equipment)
- Fans
- Gas Cylinders (Propane, Etc.)
- Gas Powered Lawn Equipment
- Hazardous Waste (Aerosols, Cleaners, Pesticides, Etc.)
- Household Goods (Clocks, Irons, Lamps, Staplers, Waffle Irons, Etc.)
- Lamps and Light Bulbs
- Large Appliances (Dryers, Stoves, Etc.)
- Mercury Containing Items (Switches, Thermostats, Etc.)
- Non-Electronic Items (CDs, DVDs, Floppy Disks, Memory Sticks, VHS Tapes, Etc.)
- Radioactive Devices (Exit Lights, Smoke Detectors, Etc.)
- Small Kitchen Appliances
- Solar Panels
- Styrofoam
- Vacuum Cleaners/Shop Vacs
- Vehicle Air Bags

ELECTRONIC WASTE (E-WASTE) RECYCLING



The City of Tracy, in partnership with San Joaquin County and Onsite Electronics Recycling, host free E-Waste collection events quarterly on the second Saturday of the following months: January, April, July, and October.*

These free E-Waste Recycling Events give residents and local businesses an opportunity to safely dispose of their unwanted electronic devices. The events aim to increase public awareness of proper methods to dispose of electronics while decreasing the amount of recyclable and hazardous items sent to our landfills.

Individuals with more than 20 electronic devices must call Onsite Electronics at (209) 234-7994 prior to the event to make arrangements for bulk collection.

For additional information, please call the Public Works Operations Division at (209) 831-6300 or visit www.RecycleInsideTheTriangle.com.

*Dates may be subject to change.

HOUSEHOLD HAZARDOUS WASTE (HHW) DISPOSAL

→ Transportation safety

- Transport no more than 15 gallons or 125 pounds of hazardous waste at one time.
- Do not mix chemicals.
- Place chemicals in sealed containers.
- Transport materials in the trunk and pack to avoid spilling.

If pets or small children are in the vehicle, place items out of their reach.

→ Accepted Items

Household Cleaners:

- Abrasive Cleansers
- Ammonia-Based Cleansers
- Bleach-Based Cleansers
- Chlorine Bleach
- Disinfectants
- Toilet Cleaners

Garden Products and Pesticides:

- Chemical Fertilizers
- Flea Collars
- Fungicides and Pesticides
- Herbicide and Weed Killers
- Rodent Poisons

Automotive Products:

- Antifreeze
- Auto and Motorcycle Batteries
- Auto Paint and Primer
- Engine Cleaner and Degreaser
- Gasoline and Diesel Fuel
- Motor Oil

Household Products:

- Aerosol Spray Cans
- Medications*
- Mercury Devices
- Nail Polish and Remover
- Propane Tanks
- Sharps**
- Syringes**
- Thermometers

Universal Waste:

- Batteries
- Fluorescent Lights and Bulbs

*No controlled substances.

**Must be delivered in a heavy duty plastic container or a sealed biohazard container, available online or at your local store or pharmacy.



The City of Tracy, in partnership with San Joaquin County, offers a free Household Hazardous Waste (HHW) Collection Event in the Spring annually.

Visit www.RecycleInsideTheTriangle.com for date and time.

San Joaquin County residents can dispose of their household hazardous waste, as well as unwanted electronics (E-Waste) and universal waste (U-Waste), at this event or at the County's HHW facility. The County's HHW facility is open year-round, Thursday - Sunday from 9:00 AM - 3:00 PM for County residents to dispose of these HHW items free of charge.

The HHW facility also has a re-use room of items that are available for residents to take and use. These are items dropped off by residents, are usable, and are free of charge. For additional information or questions, residents can contact the San Joaquin County Solid Waste Division at (209) 468-3066.

HHW products are usually marked with caution or warning labels, and contain hazardous chemicals that may be corrosive, flammable, reactive, or toxic. It is illegal to dispose of these items down drains, in the garbage, or in the gutter or storm drains because of the dangerous materials they contain that threaten the environment and human health.

In addition to HHW, it is also illegal for consumers to dispose of unwanted electronics and universal waste in the garbage. Typical E-Waste and U-Waste items found in households may contain toxins of corrosive material which can also pose a threat to the environment and our health.

**San Joaquin County Household
Hazardous Waste Consolidation Facility**
7850 R.A. Bridgeford Street
Stockton, CA 95206
(209) 468-3066

MEDICATION & SHARPS DISPOSAL

PAINT DISPOSAL



Tracy offers year-round drop-off locations to ensure proper disposal of your expired/unwanted prescriptions, over the counter medications, and Sharps*. **Liquid medications are not accepted.**

Prior to disposal, please do the following:

- Remove pills from containers and packaging.
- Consolidate loose pills in a clear, resealable plastic bag.
- Remove personal information from any packaging.
- Medical Sharps* are accepted only in sealed bio-hazard or other sealed sturdy plastic containers.

Sharps*, expired/unwanted prescriptions, and over the counter medications that are not controlled substances (no liquids) can be taken to:

- *Tracy Police Department*
1000 Civic Center Drive, Tracy, CA
(209) 831-6550

Sharps* can also be taken to the:

- *Tracy Material Recovery Facility (MRF)*
30703 S. MacArthur Drive, Tracy, CA
(209) 832-2355.



PaintCare, Inc. is a non-profit 501(c)(3) organization that encourages households and businesses to take their unwanted, leftover paint to a PaintCare drop-off site. All PaintCare sites accept up to five gallons per visit (some take more).

Visit **www.paintcare.org** for a list of drop-off locations as well as a list of accepted and not accepted items.

Please call ahead to confirm the location hours, availability, and to ask if they accept the type of paint you would like to recycle. Sites do not accept aerosols (spray cans), leaking, unlabeled, or empty containers.

Dunn-Edwards Paints
3380 N. Tracy Blvd.
(209) 229-2949

Van's Ace Hardware
2695 N. Tracy Blvd.
(209) 835-8286

*San Joaquin County Household
Hazardous Waste Facility*
7850 R.A. Bridgeford Street
Stockton, CA 95206
(209) 468-3066

MATTRESS RECYCLING



The Tracy Material Recovery Facility partners with the Mattress Recycling Council (MRC) as a collection site for old mattresses. Details about the Mattress Recycling Program can be found by visiting: <https://byebyemattress.com/California> or by scanning the QR code below. Residents and businesses can recycle up to six mattresses or box springs per day, per vehicle, at no charge.

The program accepts various types of mattresses, including those made from foam, springs, or futons.

If the mattress or box spring is severely damaged, soiled, or contaminated with mold, excessively wet, frozen, or infested with pests, please reach out to Tracy Disposal for further instruction.

Residents can either take old mattresses to the Tracy Material Recovery Facility at 30703 S. MacArthur Drive, Tracy, or contact Tracy Disposal at (209) 835-0601 if pick-up service is needed. Please note that if pick-up is needed, fees will be applied, or will be used as the annual clean up.

Scan the QR Code below
for more information about the
Mattress Recycling Council (MRC)

➔ *More Info...*

- Limit six Mattresses per day, per vehicle
- Residents or businesses who need to dispose of more than six mattresses will be charged a per unit handling fee plus the weight of the load.



OIL DISPOSAL



Cooking oil and grease are common culprits when it comes to clogged pipes and drains. Not only can this cause headaches for residents, but it can also put a strain on the City's sewer system. To avoid costly repairs and unnecessary stress, it is important to properly dispose of oil and grease in your kitchen.

One simple way to prevent clogs is to scrape all cooled fats and grease into the garbage, rather than rinsing them down the drain. This small action can make a big difference in keeping your pipes clear and avoiding potential blockages.

For Tracy residents, there is a convenient option for disposing of cooking oil. The Tracy Material Recovery Facility, located at 30703 S. MacArthur Dr., offers a free drop-off service for up to five gallons of cooking oil per day. By taking advantage of this service, you can help protect your drains and the City's sewer system.

Remember, keeping oil and grease out of your sinks and drains is not only beneficial for your own plumbing, but also for the overall health of Tracy's sewer system. Let's work together to keep our community clean and functioning smoothly.



LEAF PICK-UP PROGRAM

The City's leaf pick-up program begins in early November and continues through late January*. Visit www.RecycleInsideTheTriangle.com for specific dates of the program.

- Continue to fill your organics container first and place it at the curb on your scheduled collection day. When your organics container is full, any excess leaves that did not fit in the container can be swept into a pile in the street. **Only leaves can be placed in the street.**
- **Leave the gutter clear so water can flow.**
- Tracy Disposal will pick up the leaf piles each week on your regular waste collection day.
- If your leaves have not been picked up by the end of the week, please contact Tracy Disposal directly at (209) 835-0601. *There may be a delay in pick-ups during times of heavier leaf fall requiring Saturday pickups.*
- Street sweepers cannot pick up leaf piles. This causes the machine to clog and could lead to the equipment being damaged.

**If you still have leaves when the program ends, place the leaves in your organics container and not in the street, as they will not be picked up.*



HOLIDAY TREE RECYCLING

Holiday trees, including flocked trees, can be placed in the street to be picked up starting December 26th, or the next waste collection service day, through the second week of January. Trees will be picked up on your regular collection day.

- If your tree is larger than six feet, please cut it in half.
- Remove all tinsel, ornaments, nails, and stands.
- Keep gutters and sidewalks clear.





COMPOST GIVEAWAY

Take your truck or trailer to:

Tracy Material Recovery Facility (MRF)
30703 S. MacArthur Drive
Tracy, CA 95377

The compost at the Tracy Material Recovery Facility (MRF) is produced from organic waste received from the agricultural community, curbside programs, landscapers, and self-haul customers. With appropriate levels of aeration and moisture, the composting process occurs naturally.

Each day, the incoming organic waste is sorted to remove all debris, large items, and trash. The grinder then chops the remaining organic waste into smaller pieces which is then placed into rows called windrows.

The City of Tracy partners with the Tracy MRF to offer free compost to City of Tracy residents during scheduled compost giveaway events. On the days of the scheduled compost giveaways, the following guidelines apply:

- Customer must receive Utility services from the City of Tracy.
- Each customer/household is allowed up to one cubic yard of compost.
- Multiple trips are not allowed.
- The giveaway is on a first come, first serve basis. There are no reservations.

- There is a daily giveaway limit of 50 cubic yards.
- A notice will be posted at the gate of the Tracy MRF once the 50 cubic yard maximum is reached.
- Pick-up hours are from 8:00 AM until 3:30 PM.

Visit:

www.RecycleInsideTheTriangle.com
for giveaway dates.

Compost is also available for purchase year-round during regular Tracy MRF hours. Visit www.tracymaterialrecovery.com for year-round compost pricing and additional information on compost processing.



CITY GARAGE SALES

The City of Tracy offers an annual Garage Sale twice a year, one in the Spring and one in the Fall, for residents to participate in, rotating between the East and West side (Tracy Blvd. being the divider between sides).

This event gives residents the opportunity to sell their unwanted items rather than throwing them away. It also supports the reuse and recycling of appliances, electronics, furniture, and other household items that are normally disposed of in a landfill.

Garage Sale participants are asked to hold their sales from 8:00 AM to 1:00 PM. If you are a buyer, we recommend shopping before noon for the best buys.

Visit www.RecycleInsideTheTriangle.com for dates of events.

➔ Registration Information

To register to participate in the City Garage Sale:

- Obtain and complete registration form by visiting: www.RecycleInsideTheTriangle.com
- Email registration form to: garagesale@cityoftracy.org
- Fax registration form to: (209) 831-4472
- Mail or drop off registration form to:

City of Tracy - Operations Division
Attn: Garage Sale
520 Tracy Blvd.
Tracy, CA 95376

➔ How to Locate Garage Sales

A garage sale map with a list of participating addresses will be available the week of the scheduled event on our website:

www.RecycleInsideTheTriangle.com
and at the following locations:

- Boyd Service Center
- Chamber of Commerce
- City Hall
- Coffee shops
- Various local downtown businesses



➔ Advertisement

Signs are not permitted per Tracy Municipal Code 10.08.4510. Posting signs can create safety hazards for drivers and creates blight in our community. The City advertises the event for you in the local newspaper, various businesses, and the City's local television channel and social media sites. Posting on your own social media sites is also a great way to let people know you are having a garage sale.

All garage sales, both registered and non-registered, will be subject to Tracy Municipal Code Section 10.08.3170(a), which states:

Garage sales on residentially zoned property shall be permitted under the following conditions: (a) Only one such sale may be conducted in any four month period and shall be limited to not more than three consecutive days or two consecutive weekends not to exceed four days in all. Such sale shall not be conducted between the hours of 8:00 PM of any day, and 8:00 AM of the following day. Sales shall not encroach or be made on or from public streets or rights-of-way.

COMMUNITY BEAUTIFICATION PROGRAM

The City of Tracy has created the Community Beautification Program in an effort to give residents the opportunity to give back to their community. This initiative invites volunteers to participate in clean-up efforts, enhancing the City's overall appearance. By volunteering, residents are able to contribute to a more beautiful and welcoming Tracy!

There will be scheduled events throughout the year that residents can register to participate in up to a week prior to the scheduled event. Though registration is not required, it is strongly encouraged. This will allow staff to better select a location and provide supplies such as gloves, pickers, and garbage bags. Residents who do not pre-register for the event are still welcome to participate, but may have to use their own supplies.

Volunteering at these events can also count toward community service hours for students and for other organizations.

➔ Registration Information

To register to participate in the Community Beautification Program:

- Obtain and complete the registration form by visiting: www.RecycleInsideTheTriangle.com
- Email registration form to: CleanTracy@cityoftracy.org
- Fax registration form to: (209) 831-4472
- Mail or drop off registration form to:

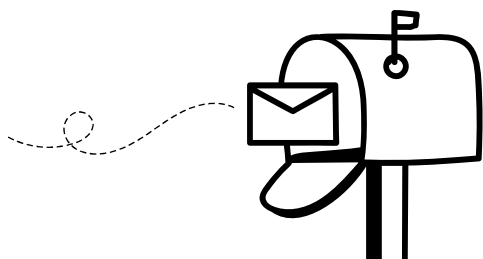
City of Tracy - Operations Division
Attn: Community Beautification
Program
520 Tracy Blvd.
Tracy, CA 95376

For more information, please visit:
www.RecycleInsideTheTriangle.com.



➔ How to Locate Clean-Up Sites

Once selected, the location will be emailed to all registered participants at the beginning of the event week. The location will also be posted on the City's website, social media sites, and the Tracy Press.



MAINTAIN-A-DRAIN PROGRAM



The Maintain-A-Drain program is made up of community volunteers that assist with keeping the storm drains in their neighborhoods or business areas free of debris. Volunteers who choose to participate will receive a leaf rake, plastic bags, rain poncho, and safety vest.

Residents can make a difference by removing debris before it enters storm drains. Preventative maintenance allows runoff to move more freely through the City's storm drainage system and contributes to the reduction of localized flooding.

Below are guidelines to follow before, during, and after a storm:

- For your safety, check your surroundings to ensure it is safe to rake and remove debris and leaves from clogged drains. Please remember that these items will gather on the storm drain grate.
- Please check the grate before, during, and after a storm, but only when it is safe to do so.
- Do not leave the raked materials near the drains or in the gutter. Instead, deposit them in the proper waste container.
- Leaves should be placed in the organics waste container, recyclable items in the recycle container, and trash in the trash container.

- Keep debris and garbage bags clear of crosswalks, driveways, gutters, sidewalks, and wheel chair ramps at all times.

If the drain remains clogged after taking the debris off the grate, **DO NOT** pull off the grate as this may create a safety hazard. Instead call the Public Works Operations Division at (209) 831-6300 and report the problem.

After regular business hours, you may contact the Police Department's non-emergency line at (209) 831-6550 to report the problem.

If you would like to sign up for the Maintain-A-Drain program, call the Public Works Operations Division at (209) 831-6300.

SAN JOAQUIN COUNTY MASTER GARDENER PROGRAM



The Master Gardener Program is a regional program available to all San Joaquin County residents. This program provides up-to-date, practical, and University of California (UC) research-based information about home gardening and pest management to the diverse communities within San Joaquin County. The Master Gardener Program represents an exemplary partnership between the UC system, San Joaquin County, and passionate volunteers.

Volunteer Master Gardeners offer services and education to the general public. Topics include: the reduction and reuse of green waste, resource conservation, sustainable landscaping practices, tree and ornamental landscapes, fruit and vegetable growing, weed and pest management, and many other home horticulture related topics.

Master Gardeners are also involved in the planning and preparation of school and community based gardens. Have a home gardening question? The UC San Joaquin Master Gardeners help desk is staffed Monday-Thursday 9:00 am-Noon.

Contact Options:

- Call the help desk hotline at (209) 953-6112
- Visit during help desk hours at 2102 E. Earhart Avenue, Suite 200, Stockton, CA 95206.
- Email questions to: anrmgsanjoaquin@ucanr.edu
 - Please include the following information in your email:
 - Your name, phone number, and city (very important!)
 - A description of the problem, including the name of the plant (if applicable), when the problem began, and cultural history such as watering, fertilizing, pruning, pesticides, etc.
 - Photographs of the problem, if possible and appropriate.

For more information, you can visit the San Joaquin County Master Gardener website at www.sjmastergardeners.ucanr.edu or scan the QR code.



Scan Me!





2025 UTILITY RATES

RESIDENTIAL GARBAGE & SEWER RATES



Solid Waste fees are billed at a flat monthly rate depending on the size of garbage container selected. A set of organic and recycle containers is also included in the garbage service free of charge. Extra bins may be requested for an additional charge (see applicable rates below). For first or final bills, the solid waste fees are pro-rated based on the number of days in the billing cycle.

A Solid Waste Rate Study was performed in 2021, and in April 2022, City Council approved new Solid Waste Rates. Below is a table outlining the changes to Solid Waste rates through 2026. Please note that each increase takes place on the 1st of January for the corresponding year.

Waste collection services are provided by Tracy Disposal. For service issues, complaints, or problems regarding garbage pickup, please call Tracy Disposal at (209) 835-0601. For billing questions, please call the City of Tracy's Finance Department at (209) 831-6800.



Each month, water rates are based on a flat water meter fee (fee depends on size of meter), storm drain fee, and actual consumption. Water consumption is based on a meter reading and calculated by property type. For first or final bills, the meter, sewer, and storm drain fees are pro-rated based on the number of days in the water reading cycle.

A Wastewater (Sewer) Rate Study was performed in 2022. Proposed rates for fiscal years 2025-2028 were presented to, and passed by, City Council in June 2023. Rate adjustments will be effective on the 1st of July each year. If you have questions about your water bill, please call the City of Tracy's Finance Department at (209) 831-6800.

Solid Waste, Recycling, and Organics (Residential)			
Calendar Year	2024 (Current)	2025	2026
60-Gallon	\$56.64	\$61.12	\$63.70
90-Gallon	\$65.67	\$70.87	\$74.19
Rates for Additional Containers (Residential)			
Calendar Year	2024 (Current)	2025	2026
Recycle	\$3.71	\$4.25	\$2.81
Organics	\$10.54	\$11.35	\$12.18

New Wastewater (Sewer) Rates		
Type	FY2025 (Current)	FY2026 (Effective 07/01/25)
Single Family Residential	\$53.34	\$58.14
Multi-Family Residential	\$4.86* \$4.49 Per Month Per Dwelling Unit**	\$5.29* \$4.90 Per Month Per Dwelling Unit**
*Per 100 cubic feet of water used. Subject to a minimum charge per dwelling unit.		
**Minimum charge per dwelling unit.		

LOW INCOME ASSISTANCE

The City of Tracy offers a Low-Income Rate Assistance (LIRA) Program for water, sewer, and garbage service. Reduced rates are available for qualified low income customers. To learn more about the qualifications for the LIRA program, inquire at (209) 831-6800 or email customerservice@cityoftracy.org.

You may scan the QR code below to download the Low Income Assistance Application. Complete as required and submit the form via email to customerservice@cityoftracy.org or fax to (209) 831-6846 for approval.



WATER CONSERVATION REBATES AND INCENTIVES



Smart Irrigation Controller Replacement*

Up to \$150 per customer.

Smart Timers use information about your plants, soil, and weather conditions to give your landscape the right amount of water year-round.



Lawn Removal Program*

Single Family Residential - Up to \$1,500

Multi-Family and Commercial - \$4,500

This program is designed to have property owners remove their existing grass and replace it with organic, drought tolerant landscaping. No synthetic turf or non-permeable hardscape will be approved for this program.



Ultra Low Flow Toilet Rebate

Up to \$125 per customer.

Low-volume flush toilets can reduce the amount of water used per flush. In some cases it could save as much as five gallons per flush. This program runs from July 1 to June 30 of each year and is limited to a first come, first serve basis.

***This program is only for City of Tracy Utility customers that have residential, commercial, industrial, and multi-family properties built before 2015.**

For more information, you can contact the City of Tracy Utilities Department at (209) 831-6330 or scan the QR code to get more information on how to apply for the rebates.



Scan Me

ENVIRONMENTAL GUIDELINES

HOMEOWNER, RESIDENTIAL, AND BUSINESS



- Collect, separate, and recycle motor oil, antifreeze, transmission fluid, and gear oil.
- **Never allow automotive fluids to leak or be dumped in the street or flow to storm drains.**

- Only drain pool water that is not green and doesn't contain any chlorine to the street. Discharge pool water containing copper or chlorine to the sanitary sewer system through a sewer clean-out. For more information about your sewer clean-out, please call The City of Tracy Public Works Utilities Division at (209) 831-6330.
- **Never clean a pool filter where sediment can drain to the gutter and storm drains. Instead, dispose of sediment in the garbage container.**



- Use fertilizers according to directions and never allow water to run over sidewalks and into streets when applying.
- **Use a pesticide as a last resort. If a pyrethroid is an active ingredient, consider other ways to manage the pest.**

- Never rinse pet or other animal waste into the street. Pick up pet waste by bagging it and placing it in your garbage container.



For more information
on
Stormwater Pollution
Prevention Practices,
SCAN the QR Code

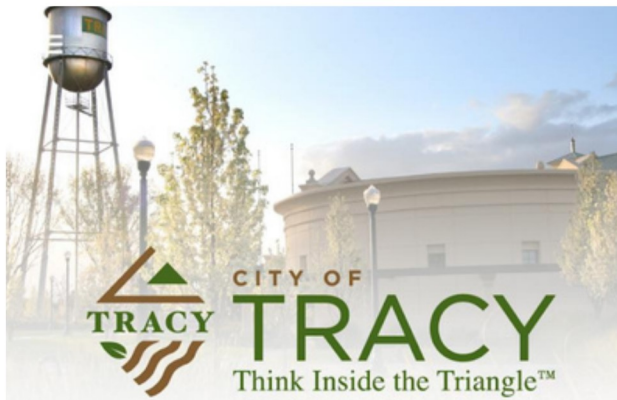


SUBMIT A SERVICE REQUEST

Have you seen any issues around the City of Tracy that need fixing?

With just a few taps on your phone, you can submit a service request with photos to City personnel, providing an efficient and direct way to report problems in our neighborhoods.

Download the “Go Tracy!” app today to start submitting your service requests. Your input is critical in ensuring our community is safe, vibrant, and thriving!



Popular Topics

(with Additional Sub-Topics)

Include:

- Animals and Pests
- Building and Engineering
- Code Enforcement
- Fire
- General
- Landscape Maintenance
- Parks and Community Services
- Planning
- Police
- Streets
- Traffic Engineering
- Traffic Signals and Street Lights
- Transportation Services
- Utilities





CITY OF TRACY
SOLID WASTE AND
RECYCLING DIVISION
520 TRACY BLVD.
TRACY, CA 95376

www.RecycleInsideTheTriangle.com

