

## NOTICE OF REGULAR MEETING

Pursuant to Section 54954.2 of the Government Code of the State of California, a Regular meeting of the **PARKS AND COMMUNITY SERVICES COMMISSION** is hereby called for:

**Date/Time:** **Thursday, March 5, 2020, 7:00 p.m.**  
(or as soon thereafter as possible)

**Location:** **City Hall Council Chambers**  
**333 Civic Center Plaza, Tracy**

Government Code Section 54954.3 states that every public meeting shall provide an opportunity for the public to address the Commission on any item, before or during consideration of the item, however, no action shall be taken on any item not on the agenda.

### MEETING AGENDA

1. Call to Order
2. Roll Call
3. Pledge of Allegiance
4. Items From The Audience - *In accordance with Procedures for Preparation, Posting and Distribution of Agendas and the Conduct of Public Meetings, adopted by Resolution 2015-052, any item not on the agenda brought up by the public at a meeting, shall be automatically referred to staff. If staff is not able to resolve the matter satisfactorily, the member of the public may request a Commission Member to sponsor the item for discussion at a future meeting.*
5. Approval of Meeting Minutes
  - a. Review and Approve the Regular Meeting Minutes from February 6, 2020
  - b. Review and Approve the Special Meeting Minutes from February 7, 2020
6. Old Business
  - a. None
7. New Business
  - a. Review and Provide Input on the Tracy Nature Park Master Plan
8. Items from Staff
  - a. Receive Youth and Teens Annual Report
  - b. Receive Seniors Comments & Concerns Quarterly Report
9. Items from Parks & Recreation Director
  - a. Aquatics Center Update
10. Items from the Commission
11. Items from the Audience
12. Adjournment

AGENDA POSTED: February 27, 2020

The City of Tracy complies with the Americans with Disabilities Act and makes all reasonable accommodations for the disabled to participate in public meetings. Persons requiring assistance or auxiliary aids in order to participate should call City Hall at (209) 831-6000 at least 24 hours prior to the meeting.

Any materials distributed to the majority of the Parks and Community Services Commission regarding any item on this agenda will be made available for public inspection in the Parks and Recreation Department located at 333 Civic Center Plaza, Tracy, during normal business hours.

**PARKS & COMMUNITY SERVICES COMMISSION  
REGULAR MEETING MINUTES  
February 6, 2020**

**1. CALL TO ORDER:**

Chair Miller called the meeting to order at 7:00 p.m.

**2. ROLL CALL:**

- a. Present: Chair Miller, Vice Chair Leiberg, and Commissioners Costa, Jimenez, Krogh, Magana, and Singh
- b. Absent: None
- c. Staff Present: Brian MacDonald, Parks & Recreation Director; Thien Nguyen, Recreation Services Supervisor; Richard Joaquin, Parks Planning and Development Manager,
- d. Recorded By: Andrea Pedigo, Executive Assistant

**3. PLEDGE OF ALLEGIANCE:**

The pledge of allegiance was led by Commissioner Krogh

**4. ITEMS FROM THE AUDIENCE:**

Conrad Levoit former Parks Commissioner stated what a privilege it was to have served the last 4 years. He stated how much of a passion he has for parks and he wants to request further discussions on skate parks and frisbee golf. He would like the Parks Commission to consider placing these items on the agenda.

No further audience members wished to speak.

**5. APPROVAL OF MINUTES FROM**

- a. Review and Approve the Special Meeting Minutes from December 5, 2019

**ACTION:** A motion was made by Vice Chair Leiberg to pass the December 5, 2019 meeting minutes and seconded by Commissioner Singh. Roll call found Chair Miller, Vice Chair Leiberg, and Commissioners Costa, Jimenez, Singh, and Magana all in favor. Commissioner Krogh abstained; Passed and so ordered.

- b. Review and Approve the Regular Meeting Minutes from December 12, 2019

**ACTION:** A motion was made by Vice Chair Leiberg to approve the December 12, 2019 with the amendment that Chair Miller and Commissioner Magana did not adjourn the meeting. Motion was seconded by Commissioner Singh. Roll call found Vice Chair Leiberg and Commissioners Jimenez and Singh all in favor. Chair Miller and Commissioners Costa, Krogh, Magana abstained. Passed and so ordered as amended.

**6. OLD BUSINESS:**

None

**7. NEW BUSINESS:**

- a. Review and make a Council Recommendation Regarding the Sister City plaque for Yasui Park

Thien Nguyen, Recreation Services Supervisor presented the staff report.



Judy Mizuno, Vice President of Sister City Association thanked the commission and staff for this plaque and the planting of the tree.

Commission comments and questions followed.

Commissioner Leiberg supports the plaque, however, he brought up the question to the staff as to why this was for Yasui Park instead of being placed in Sister City Park.

Thien Nguyen explained that the applicant Carol Minner, President of Sister City Association choose this park for the plaque based on the direct correlation to Ken Yasui and since the tree for the 30 year commemoration was already placed at Yasui Park.

Commissioner Jimenez asked the Vice President, Judy Mizuno asked if they would replace this plaque for another on in honor of the 50<sup>th</sup> anniversary. Ms. Mizuno stated no. It was then asked by Commissioner Jimenez what they planned on doing for the 50<sup>th</sup> anniversary as that is a big deal. Ms. Mizuno stated that they have not made a determination as they have not thought that far ahead. They stated this came to fruition since Ken Yasui had just passed away.

Commissioner Magana asked if we could publicize Sister City better on social media. Possibly getting rollin' rec out to the Park. Ms. Mizuno stated that their website is linked with the Cities website.

Commissioner Singh mentioned that Sister City is doing a Bingo Night fundraiser on March 7<sup>th</sup> at the Tracy Community Center that the community is welcome to join.

Commissioner Magana asked what their website was. Ms. Mizuno responded.

Commissioner Jimenez asked if the Parks and Rec will be doing an event. Staff explained that the 30<sup>th</sup> Anniversary was from 2019.

**ACTION:** Motion was made by Commissioner Magana to approve the Sister Plaque and seconded by Commissioner Costa. Roll call found all in favor; passed and so ordered.

b. Receive Update on the Parks Master Plan

Richard Joaquin, Parks Planning and Development Manager introduced our consultant WRT, Peter Winch who is currently working on the update to our Parks Master Plan.

Peter Winch, Associate Planner with WRT presented.

Commissioner question and comments followed the first ½ of the presentation.

Peter Winch answered the questions of the commission and took notes on their comments.

Peter Winch continued his presentation of second ½ of the presentation.

Commission questions and comments followed.

Peter Winch answered the questions of the commission and took notes on their comments.

Richard Joaquin, Parks Planning and Development Manager thanked Peter for coming in front of the Commission and presenting. Richard explained what the next steps will be moving forward is coming up with a vision and recommendation on how we can make our servicing programming and parks better and put those into projects which we will bring to our next community outreach in March. In June or July we will come back to the Parks Commission with a draft Parks Master Plan update where feedback will be greatly appreciated and at that time we will ask for recommendation to take this to the Planning Commission tentatively in September in which the Planning Commission will recommend us to take it to City Council.

Richard Joaquin, Parks Planning and Development Manager touched briefly on the Nature Park stating he hopes that at the March Parks Commission WRT will come back with a final conceptual master plan on.

**8. ITEMS FROM THE COMMISSION:**

**a. Review and Approve the parks Commission Annual Report to Council**

Chair Miller explained to the commission what the Annual Report is and why we take it to City Council. He explained that a subcommittee was formed to review the draft report that was provided by staff which was reviewed and revised in January and is now being presented today.

Andrea Pedigo, Executive Assistant stated that the report will be amended to show that Jimenez prepared the report and not Magana.

Vice Chair Leiberg questioned Item #4 regarding the score sheet and whether or not the years stated were correct.

Commission discussion ensued.

Director MacDonald asked Andrea Pedigo, Executive Assistant to get clarification from Vanessa Carrera, Economic Development Analyst.

Chair Miller asked that under item 3.B to change the verbiage to read: The Parks Commission reviewed a request for the renaming of the Tracy Ball Park to Ritter Family Ball Park.

Vice Chair Leiberg requested we add under item #3 a 3.C.4 stating Commission receives annual Aquatics Center updates.

**ACTION:** Motion was made by Vice Chair Leiberg to receive and approve the Parks Commission Annual report with the requested amendments to items 3B, 3.C.4, and 4. Motion was seconded by Commissioner Jimenez. Roll call found all in favor; passed and so ordered.

**b. Commissioner Singh wanted to see if we could have park cameras on the agenda or see if we could have a staff member look into what the camera situation is at our parks and if they are working. He wants to know is if we have an infrastructure in place.**

Brian MacDonald, Parks and Recreation Director explained that staff has been directed by City Council through their strategic plan to look at public safety in parks. Staff has been working with Tracy PD on evaluating locations but it comes down to funding.

Commissioner Singh asked we can disclose that information. Mr. MacDonald stated we will get direction from Council but explained what parks they are looking at.

Commissioner Singh asked if warning signs will be placed in the parks and Mr. MacDonald stated yes, but that we have recently taken down signs that were up in parks that did not have active working cameras.

Commissioner Jimenez thanked Mr. Levoit for his time while he served on the Commission. Commissioner Jimenez welcomed Mr. Krogh and she looks forward to working with him. Commissioner Jimenez thanked Vice Chair Leiberg for attending City Council meeting while being interviewed for reappointments on the Parks Commission.

Commissioner Jimenez attended the Tracy Parks Foundation meeting in January as a citizen. Commissioner deferred to speak with Director MacDonald and staff should the commission want information. Commissioner Jimenez looks forward to attending the next meeting and reporting back at our next meeting.

Commissioner Jimenez thanked the City Council for their consideration and reappointment to the Parks Commission. She looks forward to seeing the Aquatics Park come to fruition.

Commissioner Jimenez asked if she needed support Vice Chair with a second on putting the Aquatics center on the agenda. We stated that it is a standing agenda item.

Director MacDonald gave a brief update on the Aquatics Center.

Vice Chair Leiberg questioned a public meeting at the Elk Grove pool. Director MacDonald stated yes and he will update them at the next meeting. He explained that there was a tour for 2 council members, however, since 3 showed up we had to make it a public meeting.

Vice Chair Leiberg welcomed our new Commission Krogh and thanked outgoing Commissioner Levoit for his time served.

Vice Chair made mention that on Feb 7 there will be a special meeting for CDBG.

Commissioner Krogh thanked everyone for their warm welcome and he looks forward to working and learning from the Commission.

## **9. ITEMS FROM THE AUDIENCE:**

Conrad Levoit suggested that we update our Parks list on the website that needs to be updated as what amenities are at each park. This list does not state that McDonald Park has a water feature. The same list states we have 73 parks as to where the report from WRT shows we have 78 parks.

Mr. Levoit wanted to make sure that community is heard regarding skate parks and that it continues to be addressed as well as frisbee golf course. He made mention of a Facebook page which is made up of Tracy members that are advocating for this course to be put in.

Mr. Levoit also stated that the camera project which is very important to him and wants to make sure that this continues to fly and grow.

Mr. Levoit read a Facebook post from Mr. Eric Anderson regarding the skate park. He went onto read comments from other members of the community.

Mr. Levoit stated he will continue to be an advocate of the community.

Mr. Levoit made mention of the BMX course and be an advocate of that as well. He made mention of a dog park and suggested to due a dog space within an existing park.

Mr. Levoit said we are doing a great job on keeping up with in and to continue to do so.

Mr. Levoit stated the rose garden at Lincoln Park and can't wait to see what they will look like after spring. He suggested to join with the transportation department and do park tours to help bring the community to the parks and use these parks with the amenities that they have.

Mr. Levoit stated that he has a security company in town and that he currently patrols that parks and locks them up at night.

Mr. Levoit questions whether or not our minutes are placed on the website.

Andrea Pedigo, Executive Assistant stated once they are approved from the Commission and signed by the Liaison, they are posted on the website.

**10. ADJOURNMENT:**

Time: 9:43pm

**ACTION:** Commissioner Magana motioned to adjourn the meeting at the said time of 9:43pm and seconded by Commissioner Krogh and Vice Chair Leiberg.

The above agenda was posted at Tracy City Hall on January 30, 2020. The above are action minutes. A recording is available at the Parks and Recreation Department.

---

Brian MacDonald, Staff Liaison

**PARKS & COMMUNITY SERVICES COMMISSION  
SPECIAL MEETING MINUTES  
February 7, 2020**

**1. CALL TO ORDER:**

Vice Chair Leiberg called the meeting to order at 3:34 p.m.

**2. ROLL CALL:**

- a. Present: Vice Chair Leiberg, and Commissioners Costa, Krogh, Magana and Singh
- b. Absent: Commissioner Jimenez
- c. Tardy: Chair Miller
- d. Staff Present: Brian MacDonald, Parks & Recreation Director; Vanessa Carrera, Economic Development Analyst and Jolene Jauregui, Recreation Services Supervisor.
- e. Recorded By: Andrea Pedigo, Executive Assistant

**3. ITEMS FROM THE AUDIENCE:**

Debbie Miller, Tracy CA resident expressed her thanks to the Commission for all their hard work and dedication to helping the community.

**4. NEW BUSINESS**

- a. REVIEW AND ACCEPTANCE OF THE PARKS AND COMMUNITY SERVICES COMMISSION'S SUBCOMMITTEE RANKING AND FUNDING RECOMMENDATIONS FOR THE ALLOCATION OF COMMUNITY DEVELOPMENT BLOCK GRANT (CDBG) FUNDS AND HOME INVESTMENT PARTNERSHIPS PROGRAM (HOME) FUNDS FOR FISCAL YEAR 2020-2021 AND RECOMMEND APPROVAL TO CITY COUNCIL

Vanessa Carrera, Economic Development Analyst provided the staff report.

Commission discussion ensued regarding the allocations for the Public Service.

Vice Chair Leiberg requested Ms. Carrera explain why the Boys and Girls Club along with the Women's Center received more than the \$8000.00 cap for their ranking level.

Ms. Carrera explained that after all funds were disbursed. There was a balance \$1875.00. The subcommittee decided the split this amount and allocate the funds to tier 2.

Commission discussion continued. Vice Chair Leiberg thanked all applicants for their participation and commitment to the Community.

Commissioner Singh thanked everyone for their involvement and hard work.

Commissioner Krogh questioned if we could take \$2249.00 that was taken from Tracy Senior Association and disburse it differently or equally.

Commission discussion and questions followed.

Clara Styles representative for Tracy Seniors Association stated she appreciated what Commissioner Krogh and Chair Miller said. Ms. Styles was wondering why one organization had to take the whole \$2249.00 hit for the increase to SJ County Food Services Pool.

Debbie Miller representative for Coalition of Tracy Citizens to Assist the Homeless had questions whether or not they take into consideration the local funding priorities when doing the scoring.

Chair Miller answered her questions.

Commission discussion continued regarding the scoring and allocation for Public Service.

Vanessa Carrera asked the Commission if they would like to keep the allocations the same or move forward with reallocating the \$2249 differently.

Vice Chair Leiberg asked if there was any other comment from the organizations.

Clara Styles representative for Tracy Seniors Association spoke and stated she does not envy them as she too was part of the allocation of funding last year.

Commission discussion continued.

**ACTION:** Motion was made by Commissioner Krogh and seconded by Commissioner Costa to approve the funding allocation as amended during discussion. Roll call found all favor; passed and so ordered.

Chair Miller suggested that we put the future scoring sheet on a future agenda item.

Vanessa Carrera spoke in regards to Chair Millers suggestion regarding the CDBG Scoring and Allocations.

Chair Leiberg responded with a recommendation to look at the scoring sheets for CDBG.

Vanessa Carrera continued her presentation on the Public Facility Funding.

Commission discussion and questions followed.

A representative from the Boys & Girls Club responded to the questions from the commission regarding how many community members the Boys & Girls service and explained why this money allocation would really help the community.

Commission discussion continued.

Vanessa Carrera gave a description of what the projects are for each of the applicants.

Debbie Miller representative for the Coalition of Tracy Citizens to Assist the Homeless gave an explanation of why they are hoping to have the committee support their request as they are hoping to purchase the home.

Commission asked questions to Ms. Miller.

Ms. Miller answered questions of the commission.

Commission asked question to the representative for the Boys & Girls Club,

Boys & Girls club representative answered questions of the commission.

Commission discussion continued.

Commission had questions for Ms. Miller, Representative for the Coalition of Tracy Citizens to Assist the Homeless.

Ms. Miller answered questions of the commission.

Commission discussion continued.

**ACTION:** Motion was made by Chair Leiberg to fund the Boys & Girls Club in the amount of \$345,396 for their HVAC project which was seconded by Commissioner Singh. Roll call found all in favor; passed and so ordered.

Vanessa Carrera continued her presentation regarding the HOME Program Funding.

Debbie Miller representative for the Coalition of Tracy Citizens to Assist the Homeless questioned the staff if you could only apply for the HOME Funding once in your lifetime.

Vanessa Carrera was unable to answer the question, but stated she would refer to the County for clarification.

Discussion from the audience stated that you could only apply once per building.

Vanessa Carrera stated she will follow up with County to clarify and will send out a follow up email to the applicants for the 20/21 FY.

**ACTION:** Motion was made by Chair Leiberg to fund the Housing Authority in the amount of \$154,074 which was seconded by Commissioner Krogh. Roll call found all favor; passed and so ordered.

Vanessa Carrera thanked the Parks Commission on their input and thanked the organization for attending and for providing clarification as needed. Ms. Carrera stated she will be taking the recommendation from the Parks Commission to Council on March 17.

## **5. ADJOURNMENT:**

Time of Adjournment: 4:46 p.m.

**ACTION:** The motion was made by Commissioner Costa and seconded by Commissioner Magana to adjourn at the said time of 4:46p.m. Roll call found all in favor, passed and so ordered.

The above agenda was posted at Tracy City Hall on February 5, 2020. The above are action minutes. A recording is available at the Parks and Recreation Department.

---

Brian MacDonald, Staff Liaison



# TRACY NATURE PARK

Master Plan

February 2020





# ACKNOWLEDGMENTS

The **City of Tracy** thank all who participated in the development of this Tracy Nature Park Master Plan

## PARKS AND COMMUNITY SERVICES COMMISSION

Jill Costa  
Linda Jimenez  
Conrad Levoit III  
Todd Lieberg  
Yolanda Magana

Mark Miller  
Rajdeep Singh  
Jacy Krogh

## STAKEHOLDER ORGANIZATIONS

Tracy Nature Park Advocates

## MEMBERS OF THE TRACY COMMUNITY

All of you who participated in workshops and showed an interest  
for the creation of Tracy Nature Park





# TABLE OF CONTENTS

## 1 Executive Summary

What is Nature .....	1.1
Nature Lost .....	1.2
Nature Found .....	1.3
Nature Created.....	1.4
Nature Enabeled.....	1.5

## 2 The Land

Constraints and Opportunities.....	2.1
Ecological Potential.....	2.2

## 3 Community Vision

Community Engagement .....	3.1
----------------------------	-----

4 Design Framework

Habitats ..... 4.1

Succession & Management ..... 4.2

Experience ..... 4.3

5 The Concept

Master Plan ..... 5.1

Elements ..... 5.2

Phasing ..... 5.3

A Legacy ..... 5.4

6 Appendix

Next Steps ..... A

Topography ..... B

Kickoff Event Summary ..... C

Site Analysis Report ..... D






# **1 EXECUTIVE SUMMARY**

- 1.1 WHAT IS NATURE?**
- 1.2 NATURE LOST**
- 1.3 NATURE FOUND**
- 1.4 NATURE CREATED**
- 1.5 NATURE ENABLED**





A group within the greater Tracy community banded together with an aspiration to establish a “Nature Park”. The City Council responded to their request by designating 86 acres on the northern boundary of Tracy (near the sports complex of Legacy Fields) to be transformed from agricultural fields to a nature refuge for the community.\* In 2019 WRT was hired by the City of Tracy to define a vision for the park through community engagement and research. Site analysis included documenting the life that exists near and within the site. Research uncovered the evolution of the landscape from the early 1800’s delta ecosystem to its present-day condition of channelized canals and agricultural fields. A series of community engagement events defined a vision for the Tracy Nature Park. The combination of analysis and community vision led to a Master Plan which provides the foundation for a legacy for the community of Tracy.

---

*\*In the early 2000s, a 150 acres was authorized by the United States Congress to be conveyed by the General Services Administration to the City pursuant to special legislation enacted in 1998. The special legislation provided that the 150 acres were to be transferred, at no cost, to the City for educational and/or recreational “public benefit” purposes. After analyzing the 150 acres for educational and/or recreational “public benefit” purposes, the City concluded that this type of use for the property was no longer viable and staff began developing alternative use options for the site. After numerous discussions between GSA and City staff, a concept was conceived whereby the use restrictions and reversionary rights recorded on the 150 acres at the Schulte Road property could be transferred to other undeveloped park property in the City. Since then, the development of Legacy Fields re-focused the City’s effort to develop that part of Tracy into a recreational use area based on location and land use planning efforts. A major component of this transfer is a public use plan that details the City’s plans for the entire replacement property with a development schedule. The public use plan is congruent with the vision to develop the Legacy Fields area into an active and passive recreational use area. This 86-acre parcel will help fulfill that vision.*

# WHAT IS NATURE?

Nature. A word often used, but much more difficult to define. A local version of Nature was defined by the community of Tracy. Through workshops and site analysis, a vision was defined which will provide the framework for the establishment of Tracy Nature Park.

---



*word cloud from a summary from the The Tracy Nature Park kickoff*



"PASSIVE, NATURAL, DRAW[ING] ON TRACY'S  
ECOLOGY, WATER, TREES, AND WILDLIFE."

"ZEN-LIKE REFUGE, GIVING PEOPLE IN TRACY A  
PLACE TO INTERACT WITH NATURE AND SOLITUDE  
IN A WAY THAT IS CURRENTLY LACKING"

*workshop participant responses in defining a vision for Tracy Nature Park*



# NATURE LOST

The Central Valley is home to an inverted-delta unlike any in the world. During the 1800's, a desire to monetize the landscape for agricultural purposes resulted in the channelization of this novel ecosystem. The site selected for Tracy Nature Park once occupied a pattern of ecosystems including grasslands, tidal freshwater wetland, non-tidal freshwater wetland and seasonal wetland. The variety of ecosystems is due in large part to the fact that the site's average elevation is just a few feet above sea level resulting in a dynamic hydrological system reflected by seasonal change.

---

*Robinson, A.; Safran, S. M.; Beagle, J.; Grenier, J. Letitia; Grossinger, R. M.; Spotswood, E.; Dusterhoff, S. D.; Richey, A. 2016. A Delta Renewed: A Guide to Science-Based Ecological Restoration in the Sacramento-San Joaquin Delta. Delta Landscapes Project. Prepared for the California Department of Fish and Wildlife and Ecosystem Restoration Program. A Report of SFEI-ASC's Resilient Landscapes Program. SFEI Contribution No. 799. San Francisco Estuary Institute - Aquatic Science Center: Richmond, CA.*



*This early 1900s photograph showing dredging work on a levee. (Covello ca. 1900, courtesy of Bank of Stockton Historical Photograph Collection)*





*Habitat complexity of the South Delta. by artists and naturalist Laura Cunningham*



# NATURE FOUND

Upon site visits to the Nature Park site, the seemingly barren agricultural landscape reveals that life does, in fact exist. A river otter was observed commuting between agricultural ditches. Just next door to the site, the hum of birds was heard and a dense flock was seen feeding on a flooded agricultural field. Just a couple miles away a remnant riparian ecosystem exists along the 'Old River' that provides a sample of what could one day exist on the site of Tracy Nature Park.

---

*For a full site analysis conducted by WRT see appendix X which also includes a list of observed species.*

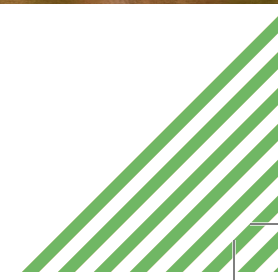


*At the north-west edge of the site a flooded agricultural field provides habitat for several species of birds and even a river otter. Photos by WRT*





*Photo of native Oak stand on an island of the Old River just a few miles from Tracy Nature Park. Photo by WRT*





# NATURE CREATED

While the mid 1800's witnessed the rapid loss of habitat in the Central Valley, another movement was escalating throughout metropolitan cities around the world. The value of inserting nature into urbanized areas was being recognized and massive public projects were occurring from New York's Central Park to San Francisco's Golden Gate Park. This artificial nature was designed in a way to appear as if it was sculpted by nature itself. While largely successful, these parks require significant maintenance and irrigation while providing minimal ecological function given the native context. As the community of Tracy has determined that a 'functioning ecology' is deemed an equal motive for a 'respite from urban life', Tracy Nature Park will be implemented in a way where ecology is given equal weight to creating an environment for the human.

---



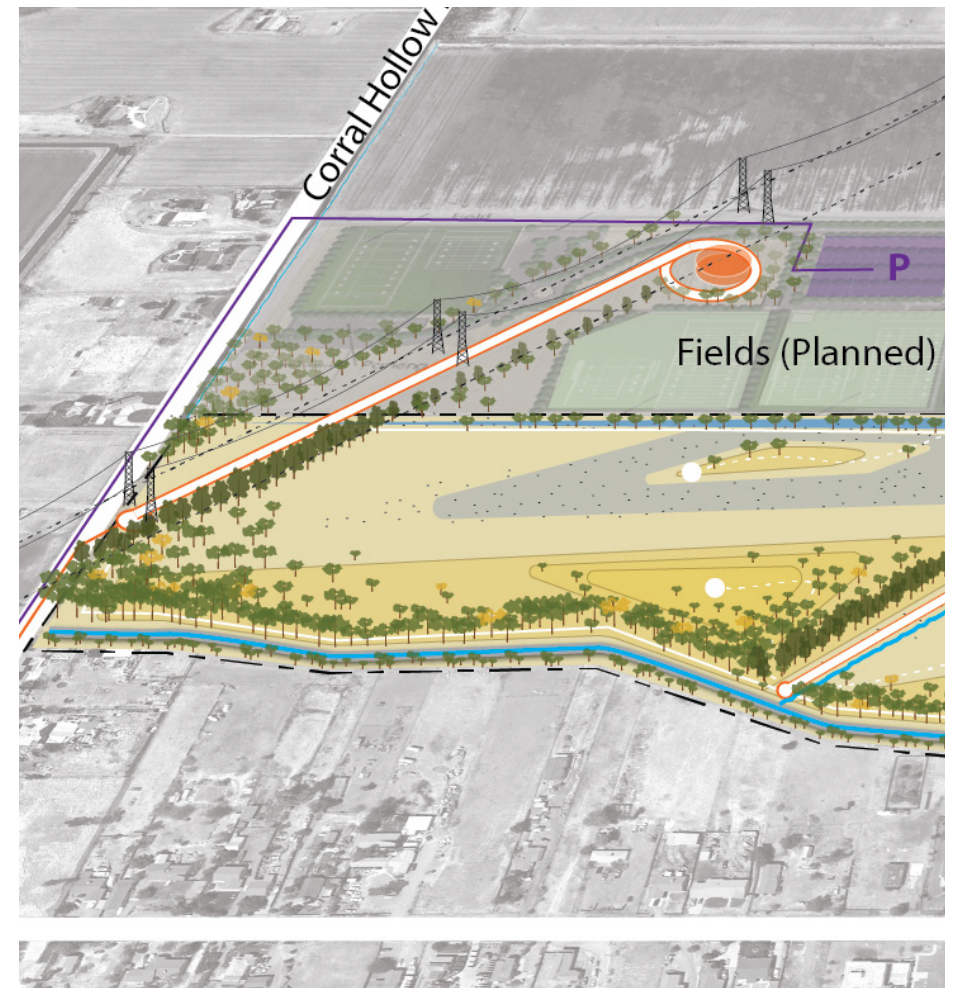
*To the left an 'English Garden' Park in Munich Germany could easily be confused for many parks designed throughout the Western world over the past 200 years*



*Illustrative Bird's-eye View of Golden Gate Park - 1892*

# NATURE ENABLED

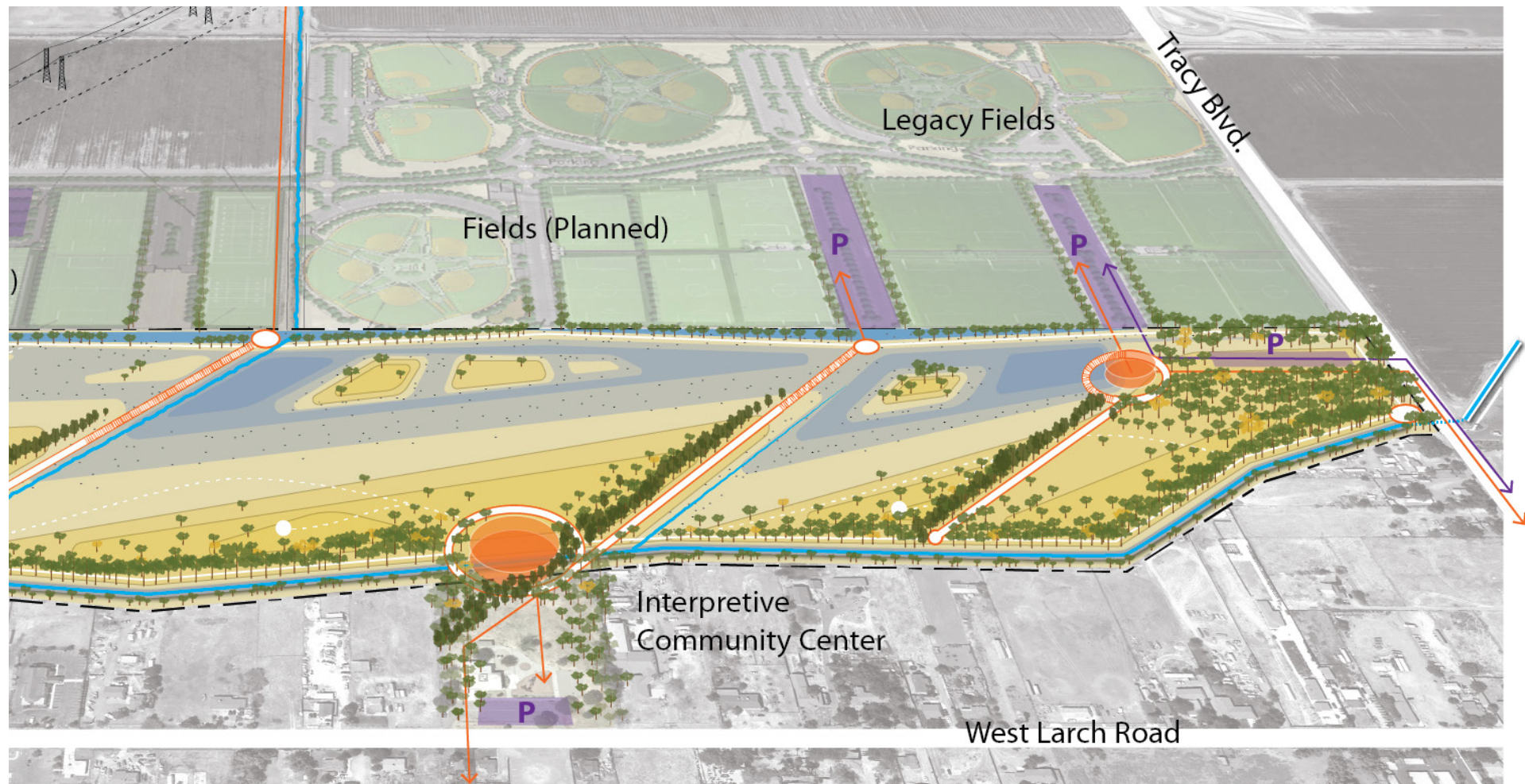
The conceptual Master Plan for Tracy Nature Park builds a framework which allows Tracy-specific 'nature' to be the actor. Design is focused to structured walkways adjacent to wind-breaks that parallel the existing cultural context of the Central Valley and provide a means for protected access while elevating users from sensitive habitat areas. The landscape is allowed to flow below elevated walks. Earth-moving emphasizes variety allowing for the maximum number of habitats to emerge. As the natural landscape is allowed to evolve, what will emerge is a one-of-a-kind nature found only in Tracy, California.







- Grassland
- Open Water
- Wet Meadow (Seasonal)
- Woodland
- Windbreak


- Accessible Pedestrian Trail
- Multi-Use Path
- Earth Trail
- Overlook







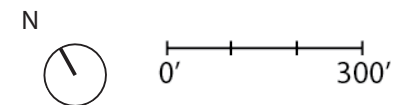
trian Trail/Bridge

-  Automobile / Parking
-  Pedestrian Connection
-  Trailhead
-  Trailhead Building  
(With Restroom/Maintenance/Education)

 Property Line

 Concrete Irrigation Canal

 Vegetated Ditch/ Canal





# 2

# THE LAND

## 2.1

## CONSTRAINTS AND OPPORTUNITIES

## 2.2

## ECOLOGICAL POTENTIAL







While the site of the potential Tracy Nature Park can feel barren today, a walk around the open field reveals that life is indeed present.

---

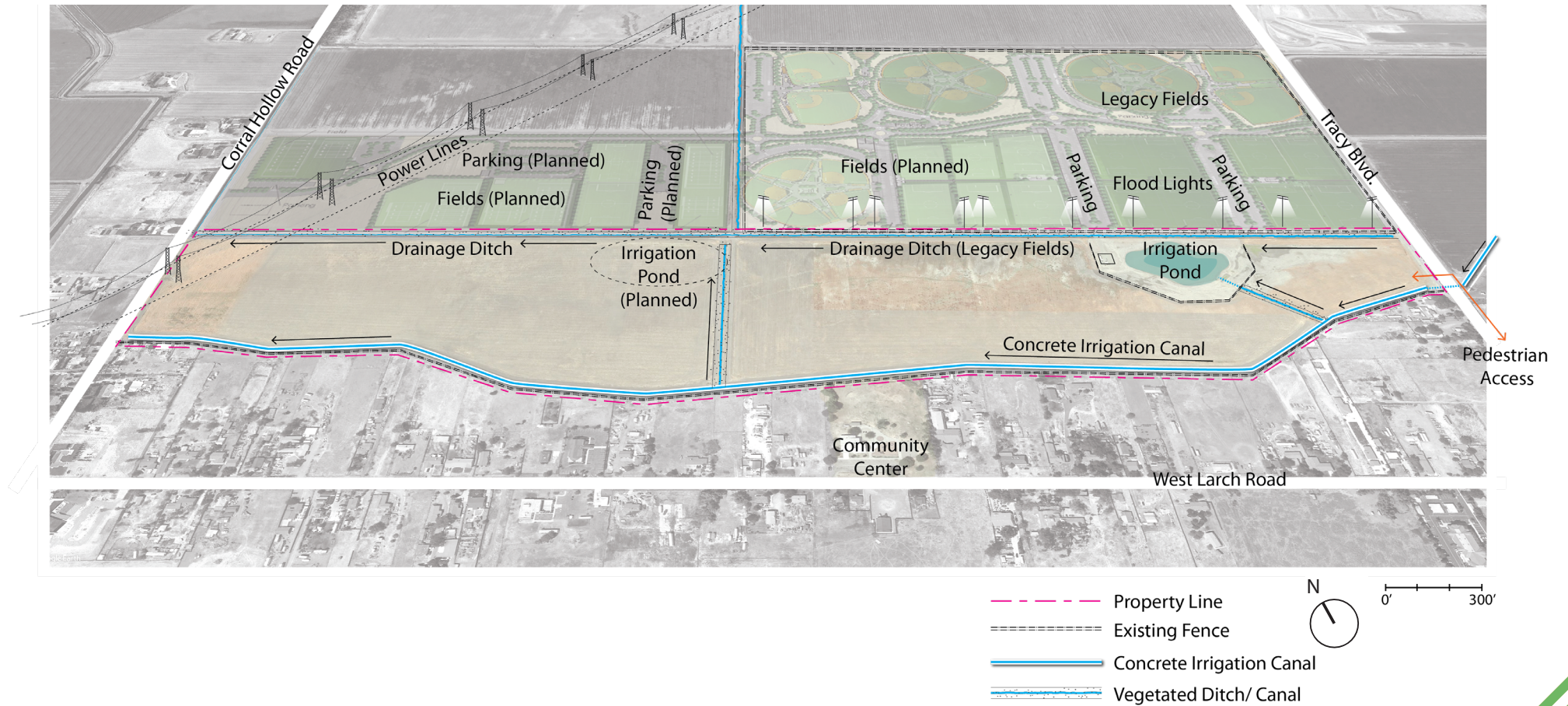


# CONSTRAINTS & OPPORTUNITIES

The context of the Tracy Nature Park site provides a range of constraints, but equally a number of opportunities including:

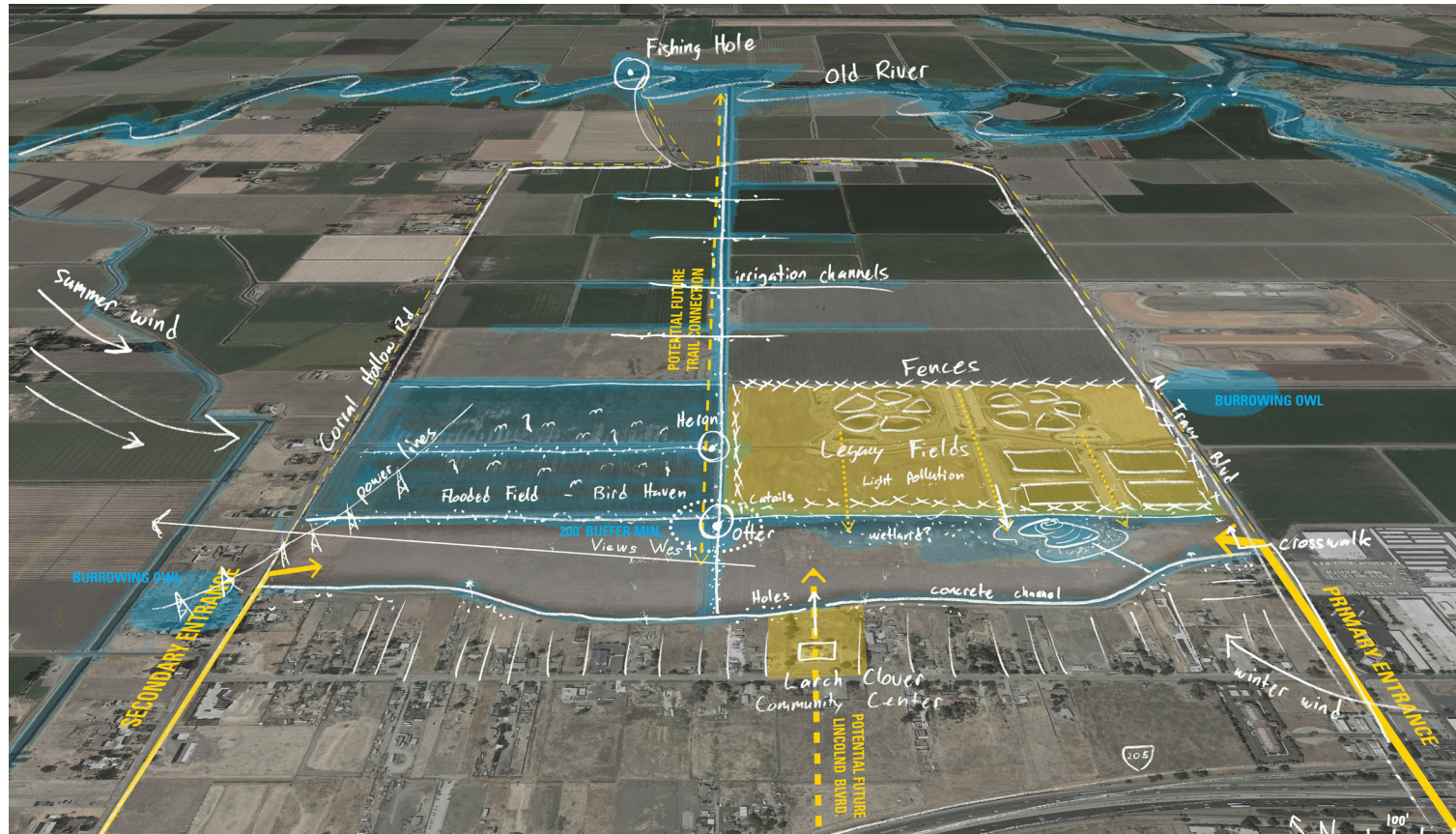
- Existing infrastructure such as power lines and irrigation canals on the site must remain, but provide an opportunity to tell the cultural story of the central valley as it relates to wind, water, and power.
- A large irrigation pond will remain as a source of water for the Legacy Fields Sports Complex, but may be modified and integrated into the Nature Park to provide a greater ecological value.
- Legacy Fields to the north provides opportunities to engage a larger audience through trail-heads and sight-lines into Nature Park. Challenges to be address are light pollution from the fields which could disrupt sensitive species if not properly buffered. Additionally, run-off from the fields will require appropriate bio-filtration to ensure algae blooms do not disrupt the nutrient balance of the aquatic habitats of Nature Park. See Appendix B for diagrams representing how topography modification might provide a solution for treating potential contaminants
- Given the site's low elevation (just a few feet above sea level) the water table is anticipated to be just below the surface. The high water table is an opportunity to have a greater diversity of habitats with seasonal variety. The high water table could result in flooding (as it relates to future sea level rise or flooding during an unlikely levee breach). A properly designed Nature Park might buffer from the adjacent Larch Clover community from existing flooding risks. It is recommended that appropriate engineering studies be conducted to better understand the existing hydrological regime of the site prior to the next phase of design.
- Preliminary soil samples (taken from Legacy Fields) suggest high levels of boron which may discourage the establishment of several species. Boron can be leached out of the soil through 'watering'. But given the high water table the Boron would likely be brought back up to the surface during a wet season. If soils were first mounded well above the highest anticipated water table the strategy of watering might be successful. Further soil samples should be taken in order to better understand the conditions of the site before the next phase of design. See apendix for diagrams relating to possible solutions through berming. See Appendix B for diagrams representing how topography modification might provide a solution for treating potential contaminants
- Funding for implementation and maintenance are undefined at this time. Grant funding opportunities may be pursued as well as the potential for private donors that might be interested in leaving their name as part of the legacy of Tracy Nature Park.





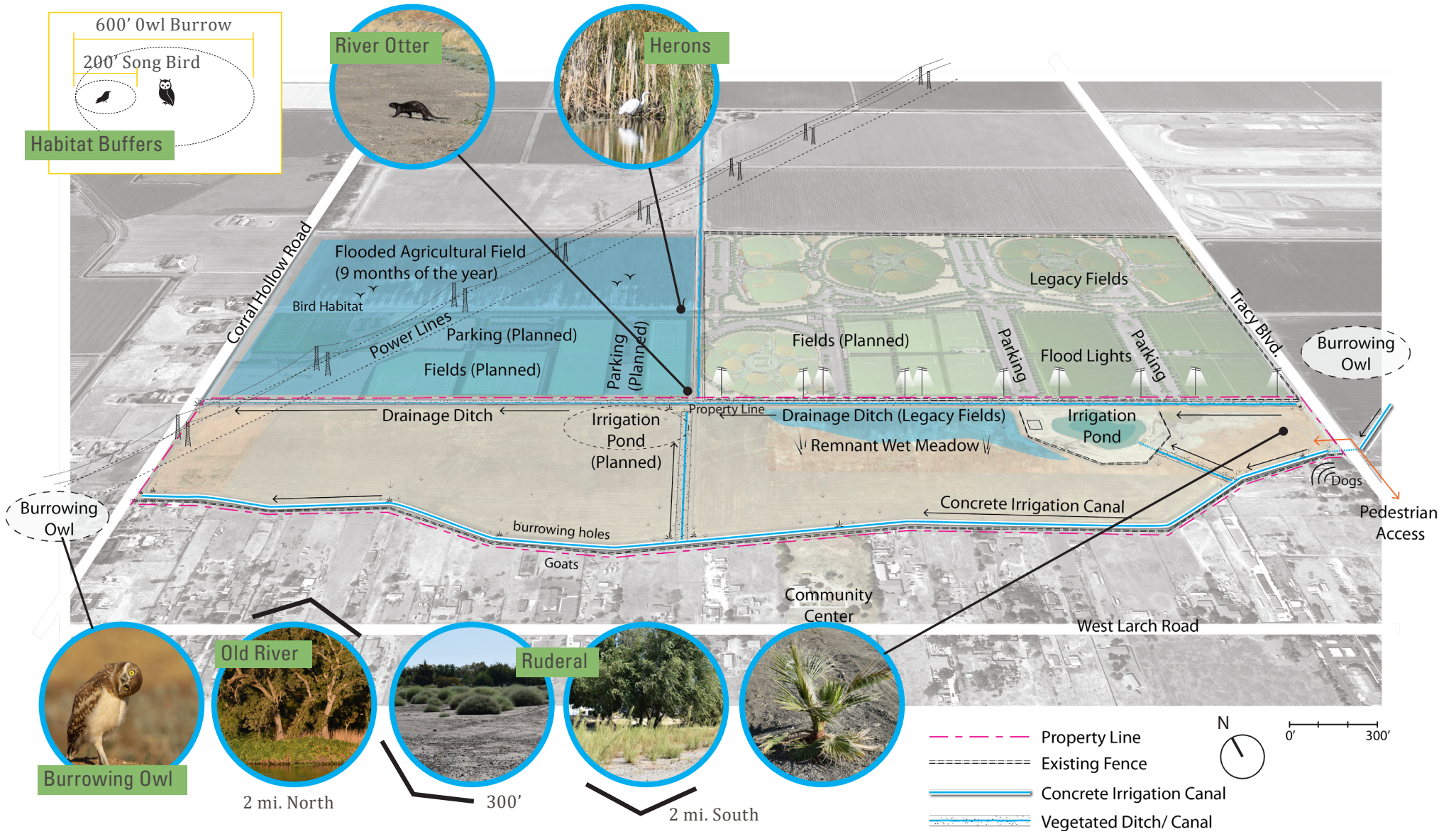


# ECOLOGICAL POTENTIAL



As discovered during initial site visits, a surprising rich ecology already exists around the site. Many of these pioneer species were mapped and assisted in defining metrics for the design framework. Buffer distances for sensitive species will be important to incorporate into the path network. Fortunately, the site is large enough to accommodate several of these buffers while maintaining access for visitors of the park. See Appendix D for a full list of observed species as well as a list of species that might be anticipated to call Tracy Nature Park home.







# 3

# COMMUNITY VISION

3.1

COMMUNITY ENGAGEMENT

3.2

NATURE AS THE ACTOR



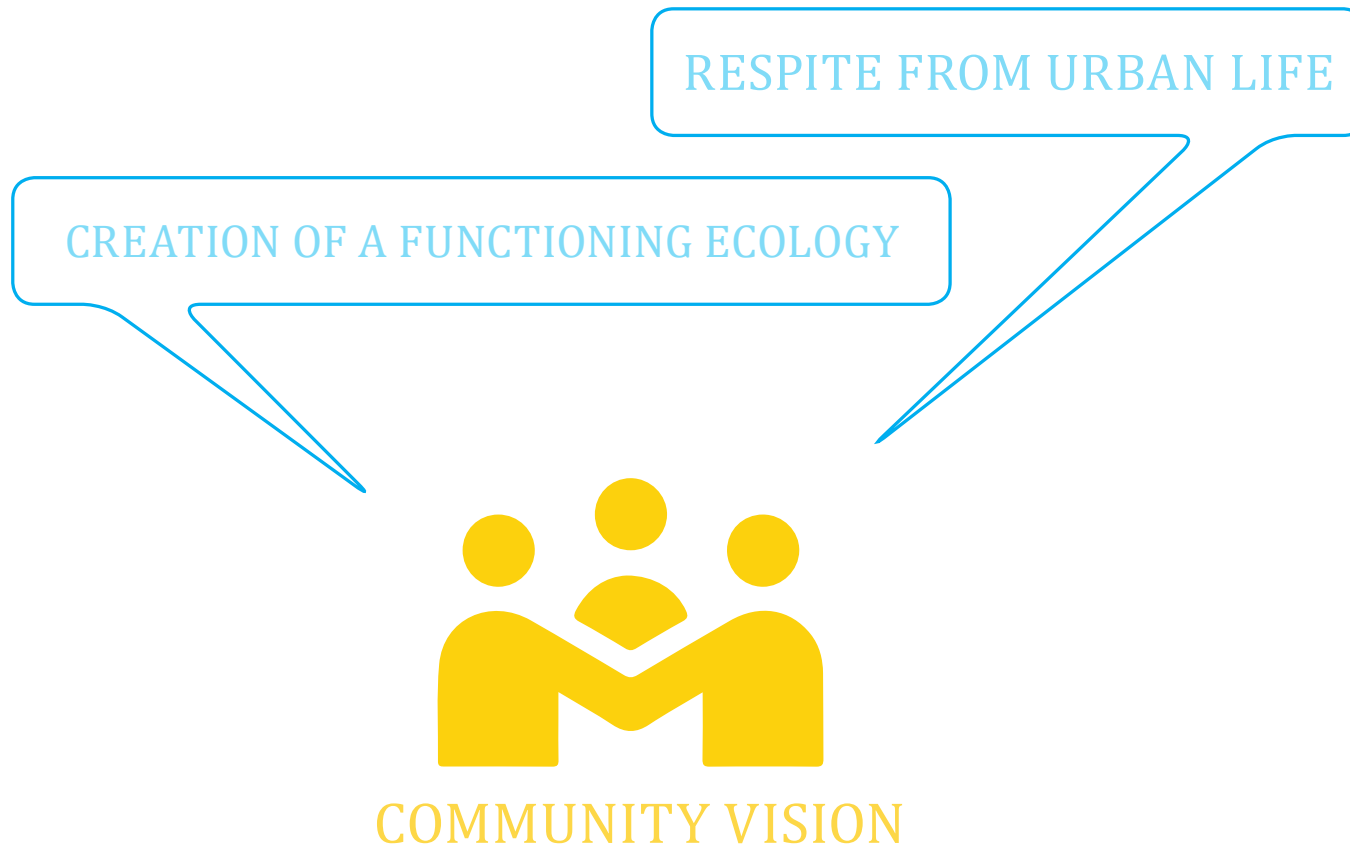
The vision for Tracy Nature Park started with a vigorous community engagement process which included a series of presentations, engagement events, and site visits. Design elements were presented and the feedback was documented and incorporated into the framework for the Tracy Nature Park Master Plan.

---



*A kick-off for the Nature Park Master Plan included a site visit to the future home of Nature Park. Community members were able to see the existing irrigation pond, canal, feel the wind and sounds of the birds, freeway and sense the strong afternoon sun. The community then broke into groups where they discussed the specific elements of the site and presented their findings to the larger group.*

# COMMUNITY ENGAGEMENT



Two major themes emerged from the kickoff event which provided the vision for the conceptual master plan. The community acknowledged that these themes are not mutually exclusive and instead have some level of co-dependency.



## ELEMENTS TO INTEGRATE INTO TRACY NATURE PARK:

- Nature Trails
- Native Plants
- Woodlands
- Wet Meadow Landscapes
- Habitat buffers
- Habitat islands
- Multi-Use Trail on periphery open to bikes and dogs\*
- Interior trails to be for passive use/ hiking only
- Outdoor Classrooms
- Facilities - with appropriate budget for management/maintenance
- Disc Golf\*
- Gathering and contemplative space
- Boardwalks over sensitive areas
- Berms with overlooks
- Protection from westerly winds
- Dedicated parking
- Interpretive Nature Center

List compiled based on a series of community workshops.

\*As the community members expressed a desire for more active uses within the park, they should be enabled in a manner consistent with the ecological and nature-based vision.



**GATHERING AND  
CONTEMPLATIVE  
SPACES**



**WET MEADOW  
LANDSCAPE**



**OAK WOODLAND**



**OUTDOOR  
CLASSROOM**



**NATURE TRAIL**



**INTERPRETIVE  
NATURE CENTER**



**NATURE TOURS / VOLUNTEER  
OPPORTUNITIES**



**ELEVATED  
WALKWAYS**



**MULTI-USE TRAIL\***



# 4

# DESIGN FRAMEWORK

4.1

**HABITATS**

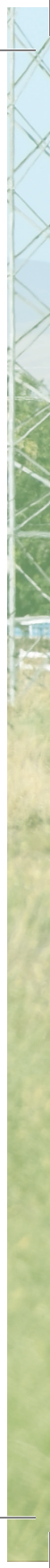
4.2

**SUCCESSION & MANAGEMENT**

4.1

**EXPERIENCE**





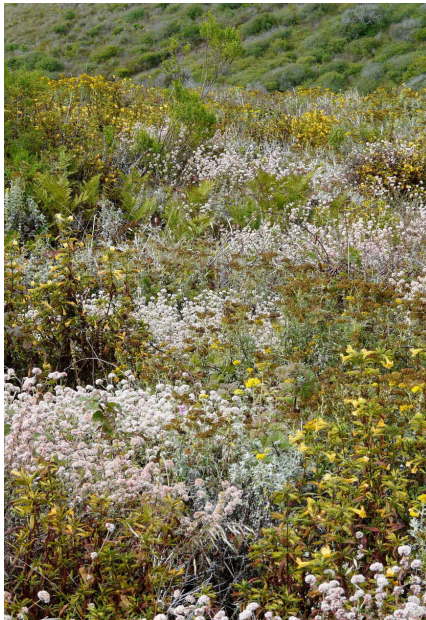
The community engagement events and site analysis lead to design frameworks which guide the concept of the Tracy Nature Park Master Plan. Habitat types were identified which historically existed within close proximity to the site. Ecological succession was defined as a management tool to aid in the evolution of Tracy Nature Park. Experiences of Nature Park were presented to the community based on the opportunities within the site to capture any existing cultural-ecology.

---

# HABITATS

Source: Robinson, A.; Safran, S. M.; Beagle, J.; Grenier, J. Letitia; Grossinger, R. M.; Spotswood, E.; Dusterhoff, S. D.; Richey, A. 2016. *A Delta Renewed: A Guide to Science-Based Ecological Restoration in the Sacramento-San Joaquin Delta. Delta Landscapes Project. Prepared for the California Department of Fish and Wildlife and Ecosystem Restoration Program. A Report of SFEI-ASC's Resilient Landscapes Program. SFEI Contribution No. 799. San Francisco Estuary Institute - Aquatic Science Center: Richmond, CA.*

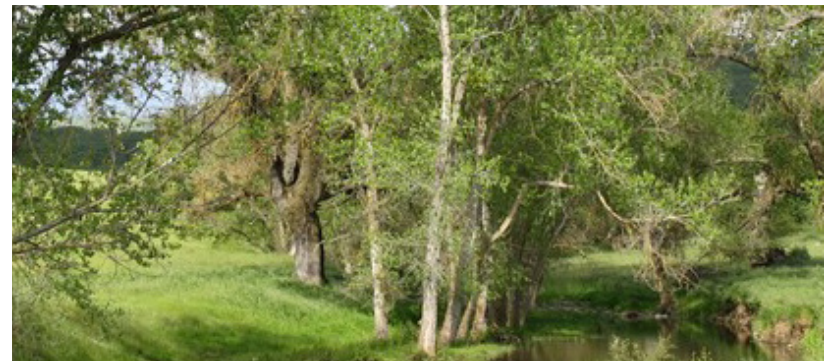
## GRASSLAND



Low herbaceous communities occupying well-drained soils and composed of native forbs and annual and perennial grasses and usually devoid of trees. Few to no vernal pools present.

*Species: Lasthenia californica - Plantago erecta - Vulpia microstachys (California goldfields - Dwarf plantain - Six-weeks fescue flower fields), Elymus triticoides (Creeping rye grass turfs), Nassella pulchra, Eschscholzia (californica) (California poppy fields), Amsinckia (Fiddleneck fields), Plagiobothrys nothofulvus (Popcorn flower fields)*

## OAK WOODLAND

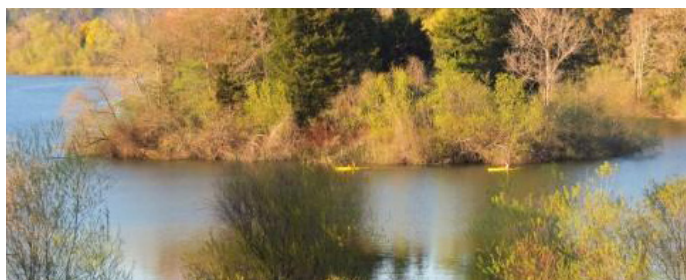


Oak dominated communities with sparse to dense cover and an herbaceous understory.

*Species: Quercus agrifolia, Quercus lobata, Quercus wislizeni, Quercus douglasii*



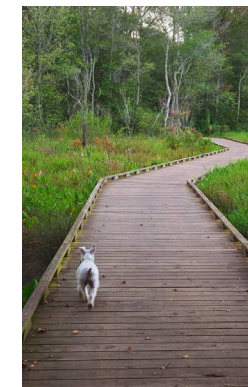
## OPEN WATER



Permanently flooded depressions, largely devoid of emergent palustrine vegetation. These occupy the lowest-elevation positions within wetlands.

*Species: Azolla (filiculoides, mexicana) (Mosquito fern mats), Stuckenia (pectinata) - Potamogeton spp. (Pondweed mats), Nuphar polysepala (Yellow pond-lily mats)*

## WET MEADOW



Perennially wet, high water table, dominated by emergent vegetation. Woody vegetation (e.g., willows). Wetted or inundated by spring tides at low river stages (approximating high tide levels).

*Species: Schoenoplectus acutus (Hardstem bulrush marsh), Schoenoplectus californicus (California bulrush marsh), Typha (domingensis, latifolia) (Cattail marshes), American bulrush marsh, California bulrush marsh, Juncus effusus (Soft rush marshes), Juncus articus (Baltic and Mexican rush marshes), Salix lucida (Shining willow groves), Eleocharis macrostachya (Pale spike rush marshes)*

# SUCCESSION & MANAGEMENT

As discussed in community meetings, maintenance and management will be critical to the long-term success of Tracy Nature park. As a response, a process-based strategy incorporating succession has been proposed for Tracy Nature Park. The gradual and natural transition of plant communities from one ecology to another, is called ecological succession. Through understanding the evolution required for certain habitats to be achieved, a successful management plan can be scripted which embraces change as part of the process. While habitats can be planted 'overnight' these often require costly construction and intense maintenance actions and as a result fail to meet user expectation. What is proposed is to lay the foundation for a 'succession-based design' in which establishment of habitats occur when site conditions are appropriate. This process can be 'induced' by the human through land-form modification, planting, irrigation, and specific management practices such as grazing, and controlled burns. Given uncertainty in the site hydrology, 'succession-based design' allows for flexibility in the exact locations of habitat that might also change through different times of the year and during different climatic conditions. This will add an additional layer of seasonality ensuring the experience of Tracy Nature Park is ever changing.

---





*\*Management of certain noxious species will be required.  
Seeding of a grass mix (native or non-native) will reduce maintenance and provide habitat but will require fire management.*



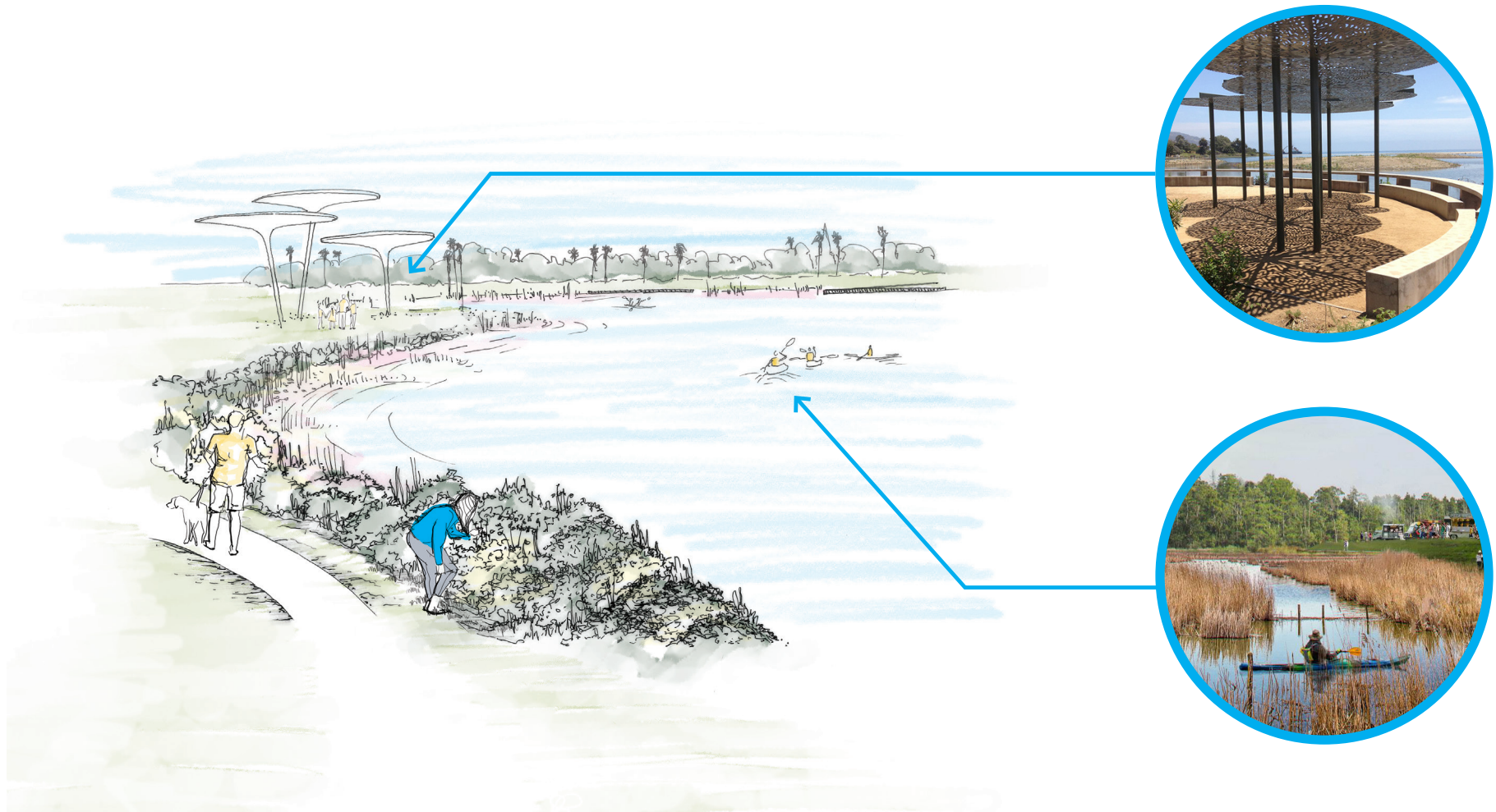
*\*Planting of certain species such as Black Walnut, certain Eucalyptus, Willow, Cottonwood, Oaks, Coyote Bush, and White Alder can be explored*

# EXPERIENCE



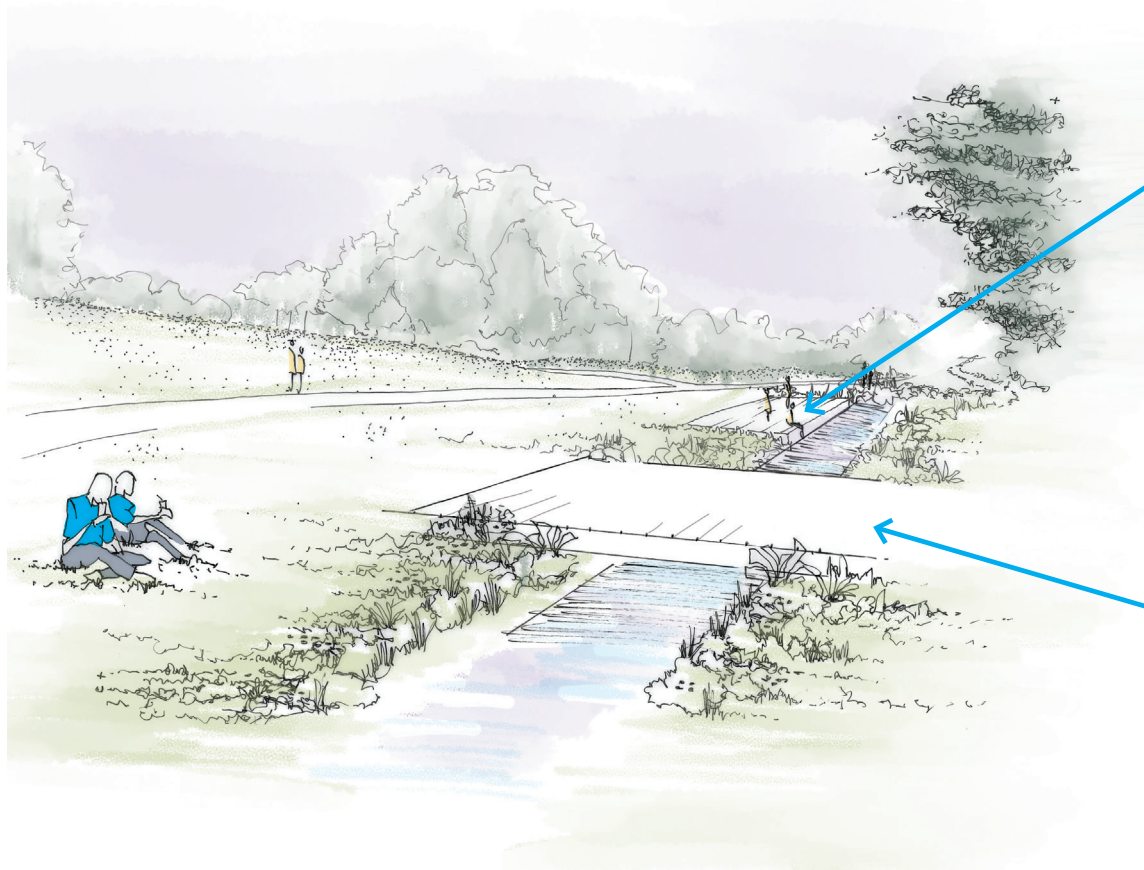
TRAILS





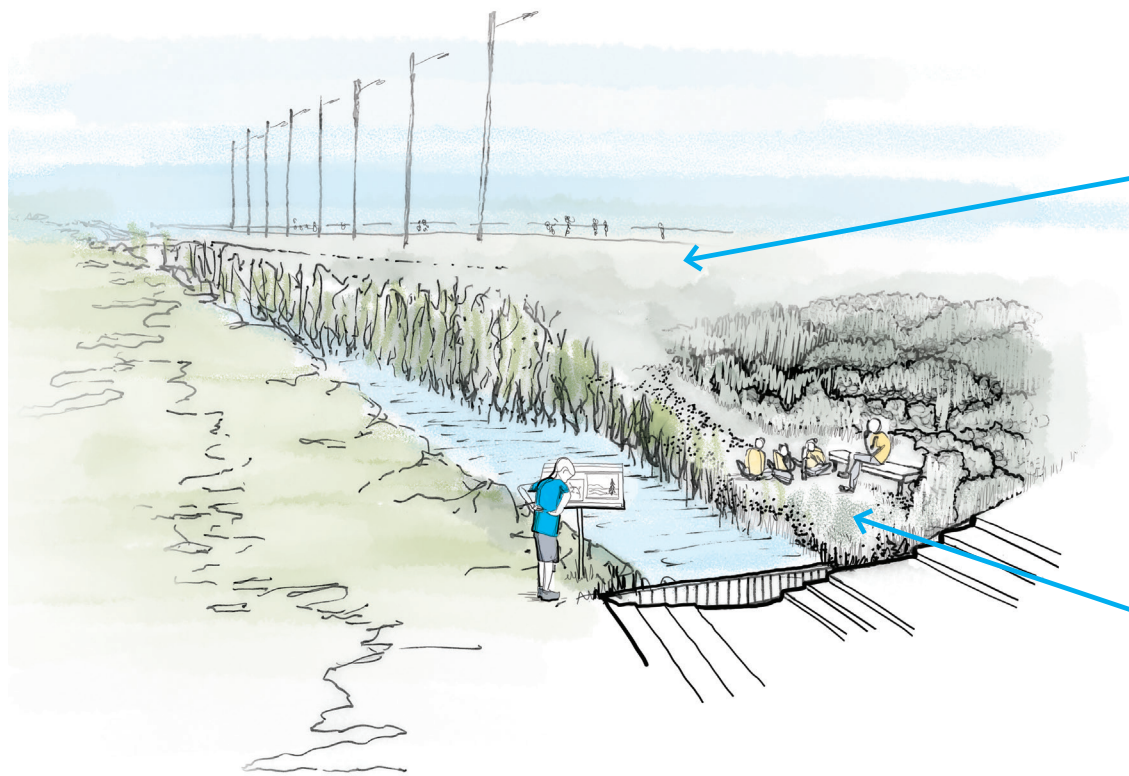
WATERFRONT ACCESS

# EXPERIENCE



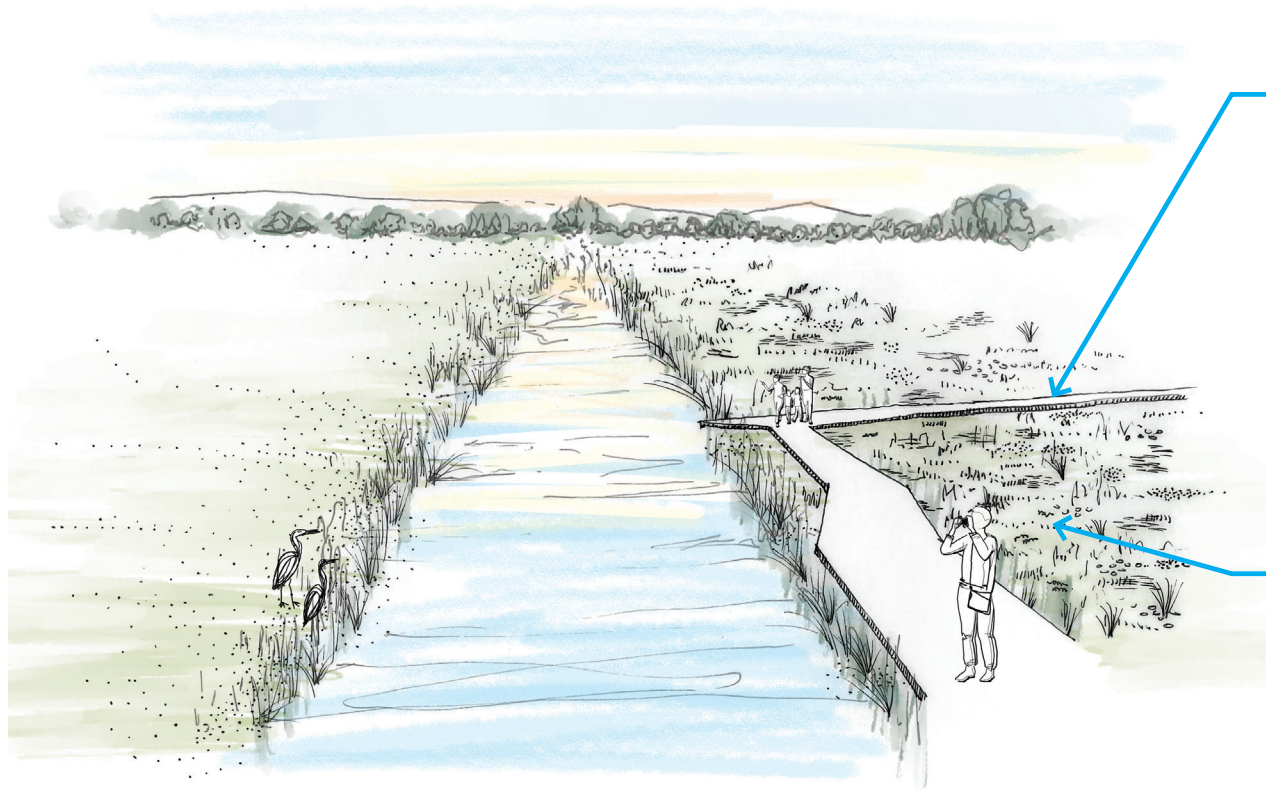
BRIDGE CONNECTIONS





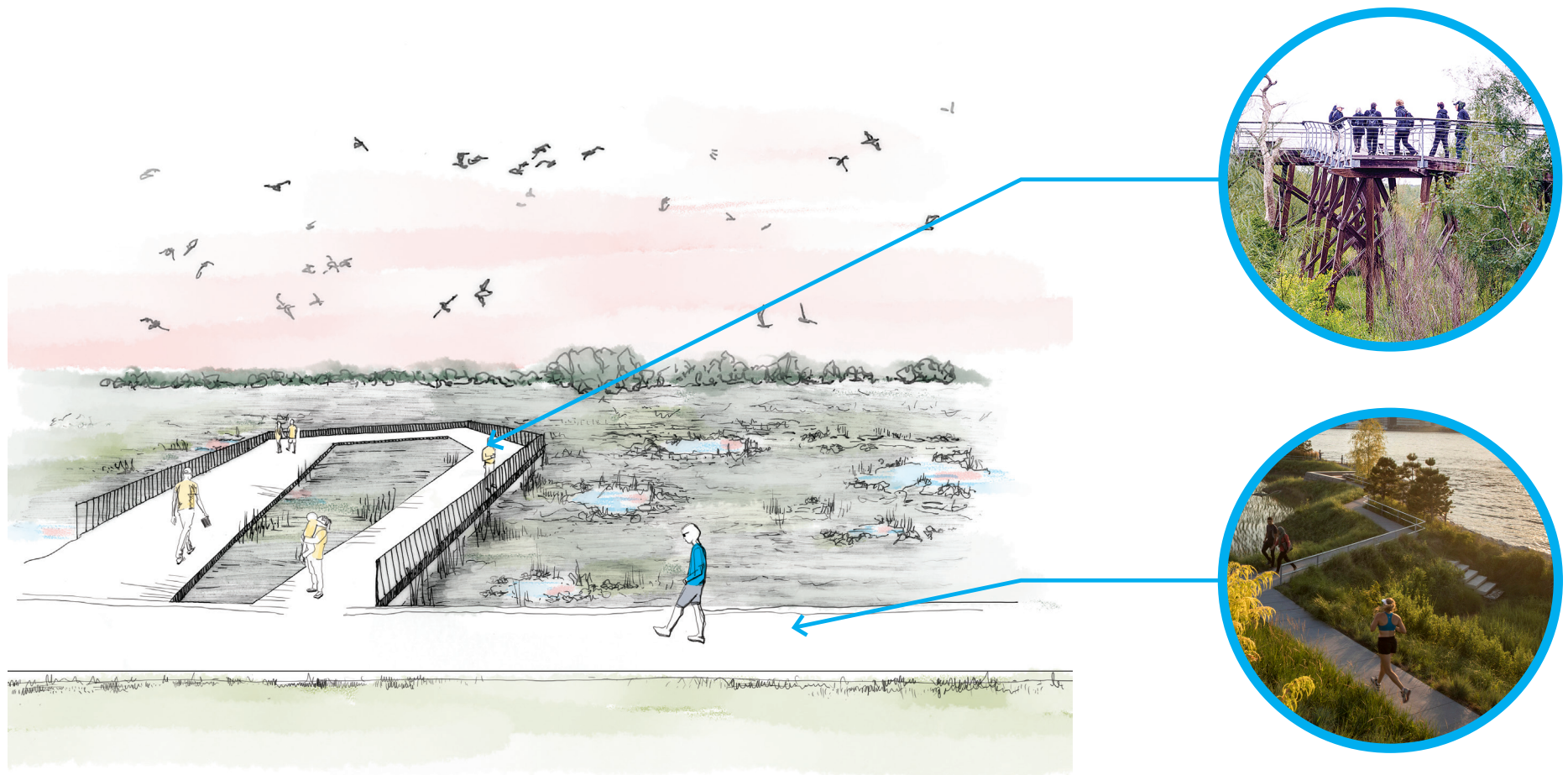
OUTDOOR CLASSROOMS

# EXPERIENCE



ENVIRONMENTAL EDUCATION





## VIEWING PLATFORMS





5

5.1

5.2

5.3

5.4

LEGACY NATURE PARK

# THE CONCEPT



MASTER PLAN

ELEMENTS

PHASING

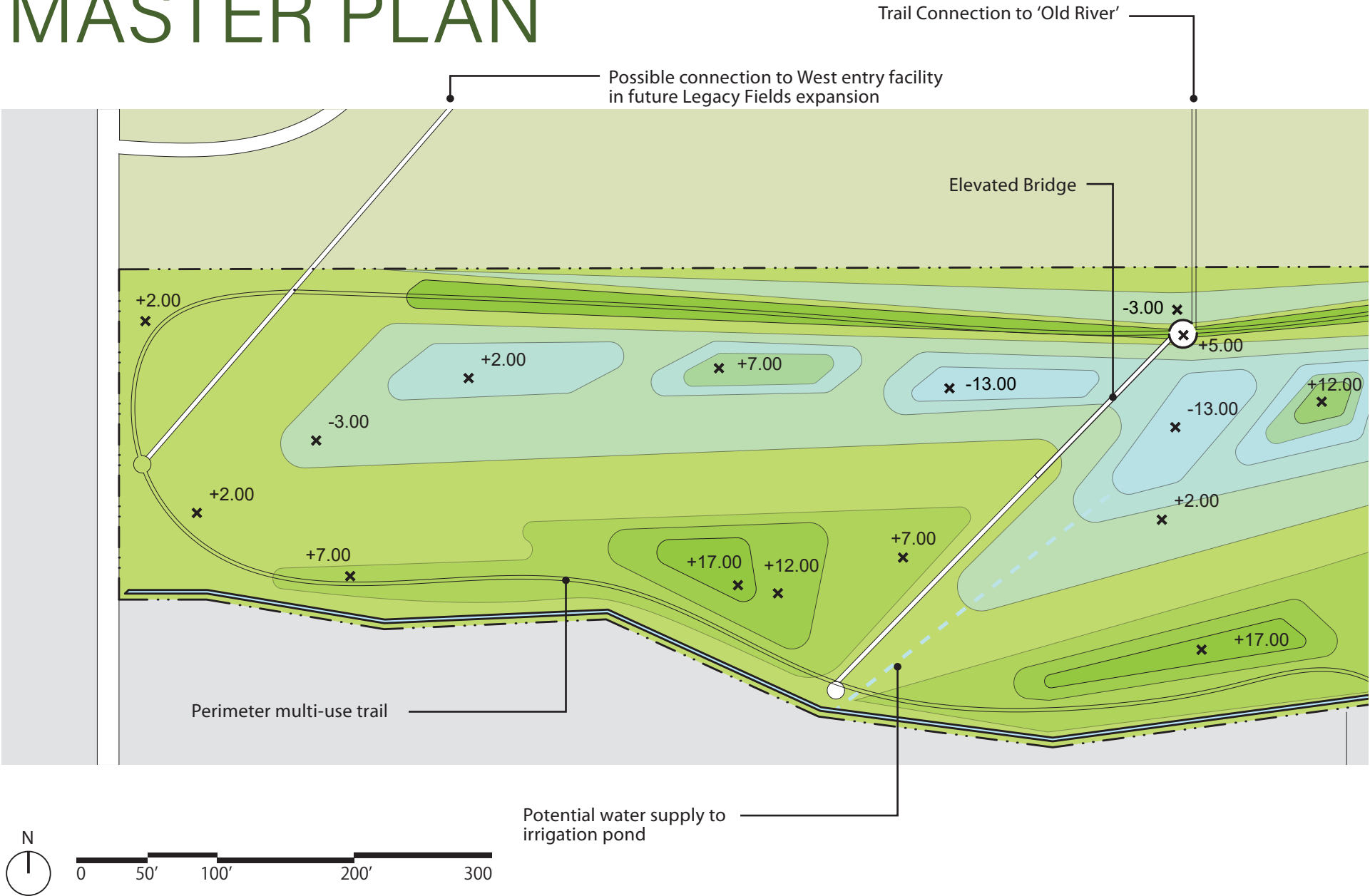
A LEGACY

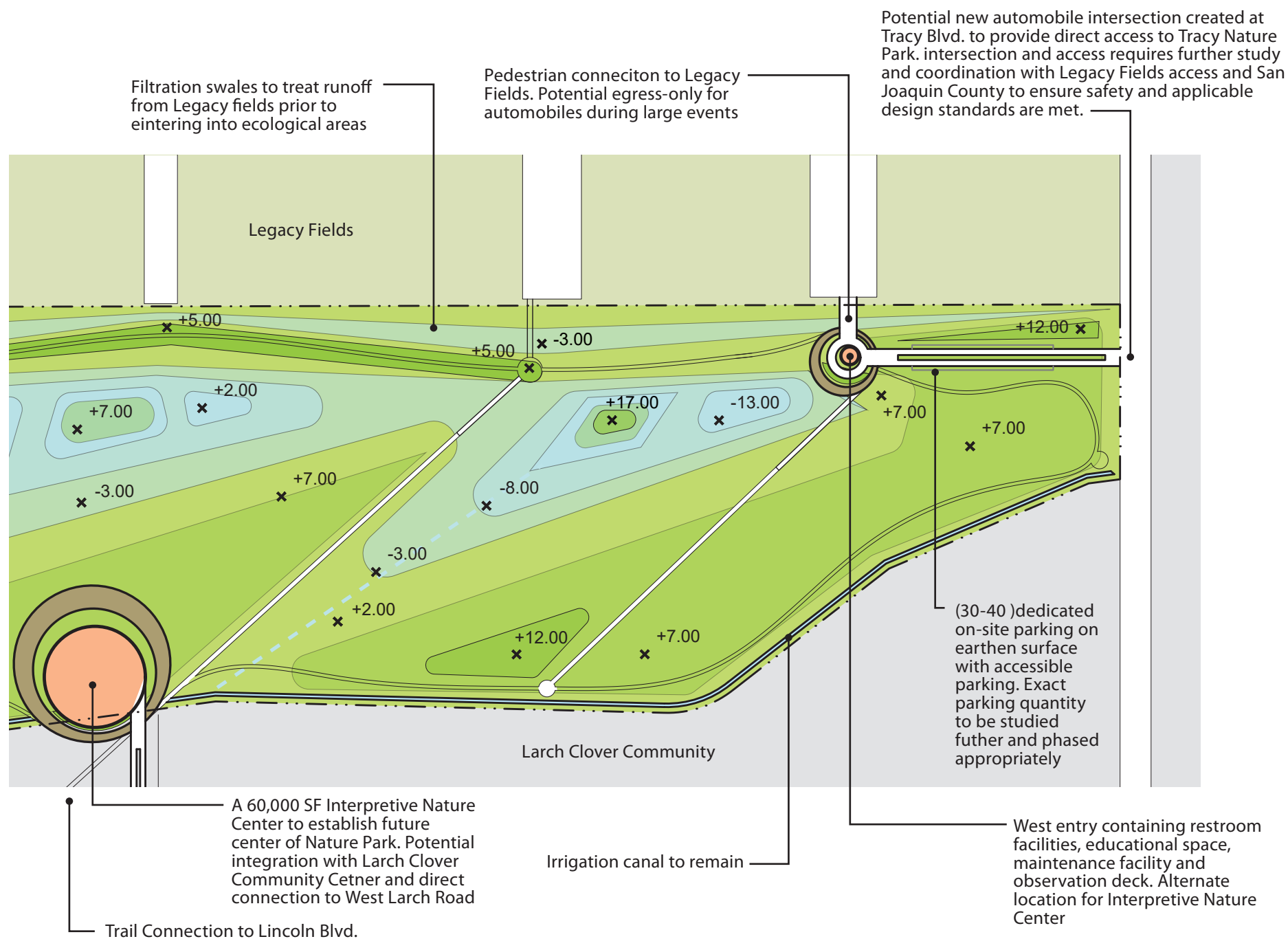
The conceptual design of Tracy Nature Park was the result of community input and informed by site analysis. The community identified the need for a nature park to serve as a retreat from urban life in parallel to providing a home for habitat. The challenge for designers was to create a park where this ecology could flourish while maintaining the ability for the community to immerse themselves in a natural environment. The solution was to limit the intensive human use to the periphery and a series of diagonal cuts across the landscape. Initial earth moving maximizes the variety of environments to ensure the maximum number of habitats might establish. The landscape remains free to change overtime as the major walks would be in the form of elevated bridges providing a degree of separation between humans and sensitive habitat. Earthen hiking trails can be found in-between these cuts to give users an ability to more deeply immerse themselves in the natural environment.

---



# MASTER PLAN







# ELEMENTS

## VEGETATION

---

Planted wind-rows to provide protection from the westerly winds along structured trails and reference the cultural landscape of the Central Valley. A planted woodland ecosystem would be established along the east entry. Buffer planting would filter out light and sound pollution from Legacy fields to the north and filter views into residential backyards of the Larch Clover community to the south.

## TRAIL / ACCESS

---

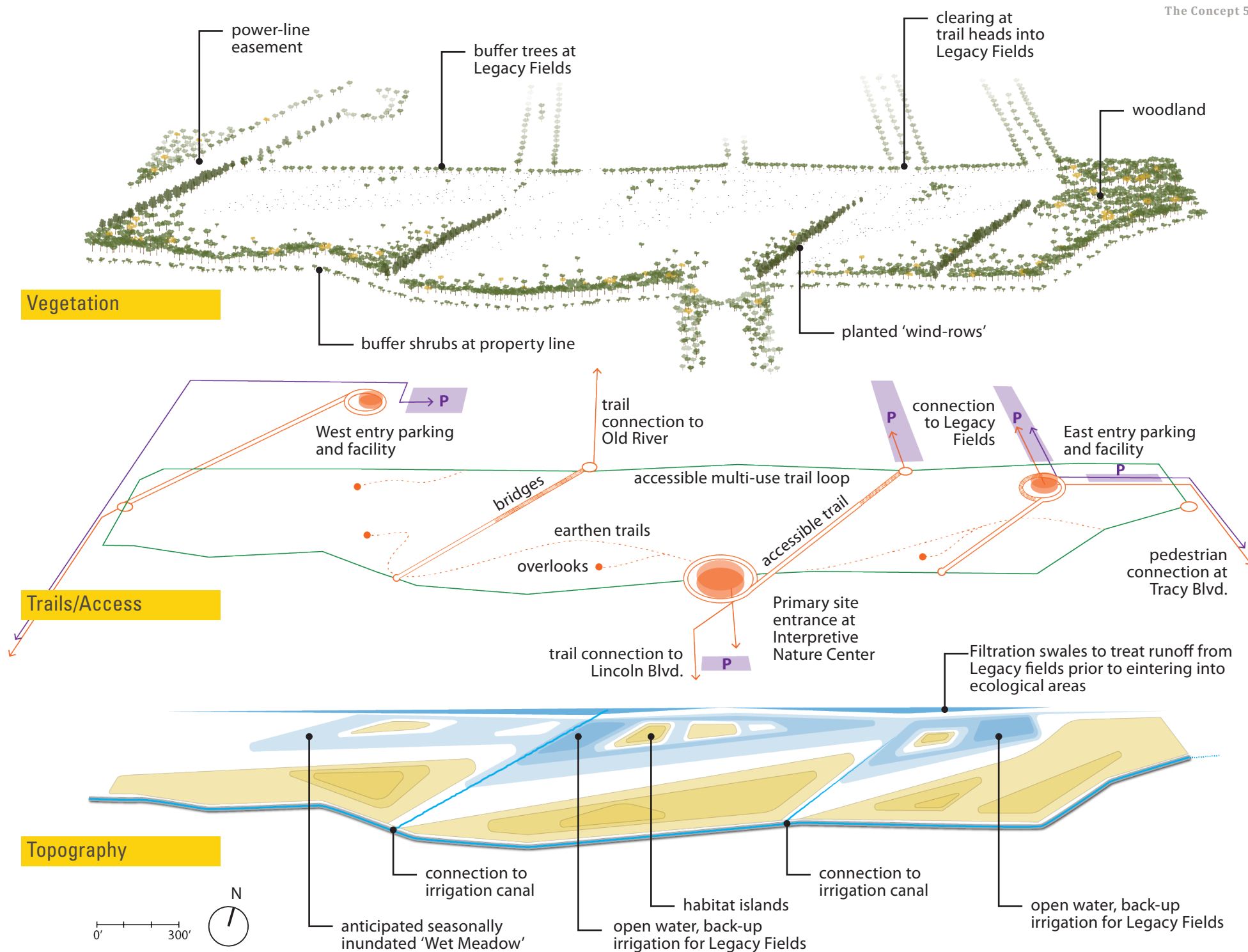
During phase 0-3 primarily access would occur along Tracy Blvd. With the establishment of an Interpretive Nature Center at the center of the site, the primary entrance may want to shift to Corral Hollow Rd.\* Additionally a west entry may be introduced within the expansion of Legacy Fields. A peripheral accessible multi-use trail would be open to more active users such as bikes while all internal trails would be limited to the passive experience of the user. Bridges and structured trails would run across the site diagonal with elevated bridges providing views of wet meadows but not impacting sensitive habitat. Trails should connect offsite to future expansion of Lincoln Blvd to the south and north to the 'Old River'.

\*This would require further study and integration with existing Larch Clover Community Center.

## TOPOGRAPHY

---

Through cut-and-fill all soil movement would be balanced on site. Berming allows for creating the framework for a greater variety of habitats. Berming also allows for the establishment of woodland habitat without being influenced by the higher levels of boron expected on the site. Habitat islands could be established to provide sanctuary for certain nesting birds. Berms would also allow earthen paths to lead to overlooks giving a greater view of the nature park and beyond to the Tracy Hills and Diablo Range. See appendix B for further diagrams and sections regarding topography



# PHASING



## PHASE 0

---

### COMMUNITY BUILD - UPON PLAN ADOPTION BY CITY COUNCIL

- Accessible trailhead connecting to existing crosswalk with temporary shade structure
- 1 mile accessible path connecting to trailhead & existing Legacy Field's parking
- 2 mile earthen access loop around perimeter
- Discontinue tillage of fields & planting of native/non-native seed mix
- Identity signage / Nature Park branding along Tracy Blvd.
- Initial tree planting by community
- Secure funding for implementation and management of phase 1
- Hydrological & soil analysis
- Begin schematic design of phase 1

## PHASE 1

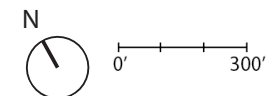
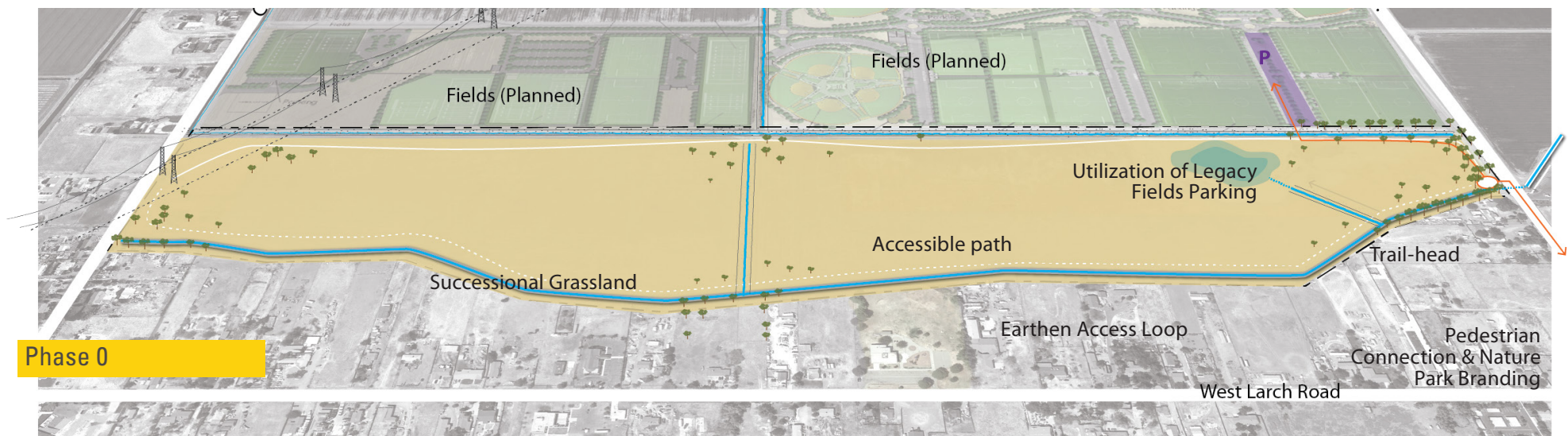
---

### INITIAL EARTH MOVING & GRAND OPENING OF NATURE PARK

- Earth moving – wet meadow zones, habitat islands, hills, buffers, windbreaks
- ¼ mile paved accessible trail loop
- Dedicated intersection and Nature Park entrance added on Tracy Boulevard
- (30-40 )dedicated on-site parking on earthen surface with accessible parking
- Native restoration & climate appropriate tree planting in woodland areas & buffers
- Interpretive sign-age & education
- Temporary restroom facility - at accessible trailhead
- Shade structures at trailheads & overlook







Dedicated automobile intersection & parking for Nature Park

# PHASING



## PHASE 2

---

### COMPLETE SITE EARTHWORK

Earth moving – wet meadow zones, habitat islands, hills, buffers, windbreaks

Integration with Larch Clover Community Center

Permanent trail-head facility / restrooms at East entry

West entry added in conjunction with Legacy Fields expansion

Additional accessible trial loops added

Additional on-site parking based on further traffic and use studies



## PHASE 3

---

### BASED ON FURTHER FUNDING OPPORTUNITIES

Dedicated Drive Entry & Parking in conjunction with Larch Clover Community Center

Expansion of trail loops & overlooks

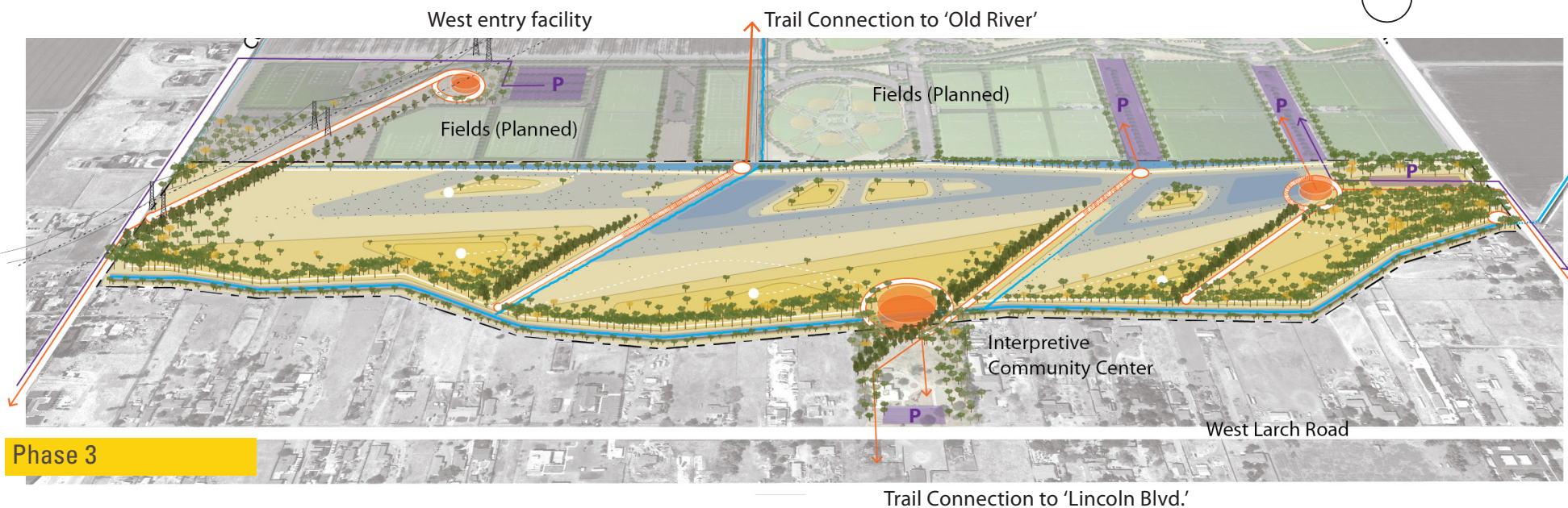
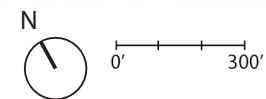
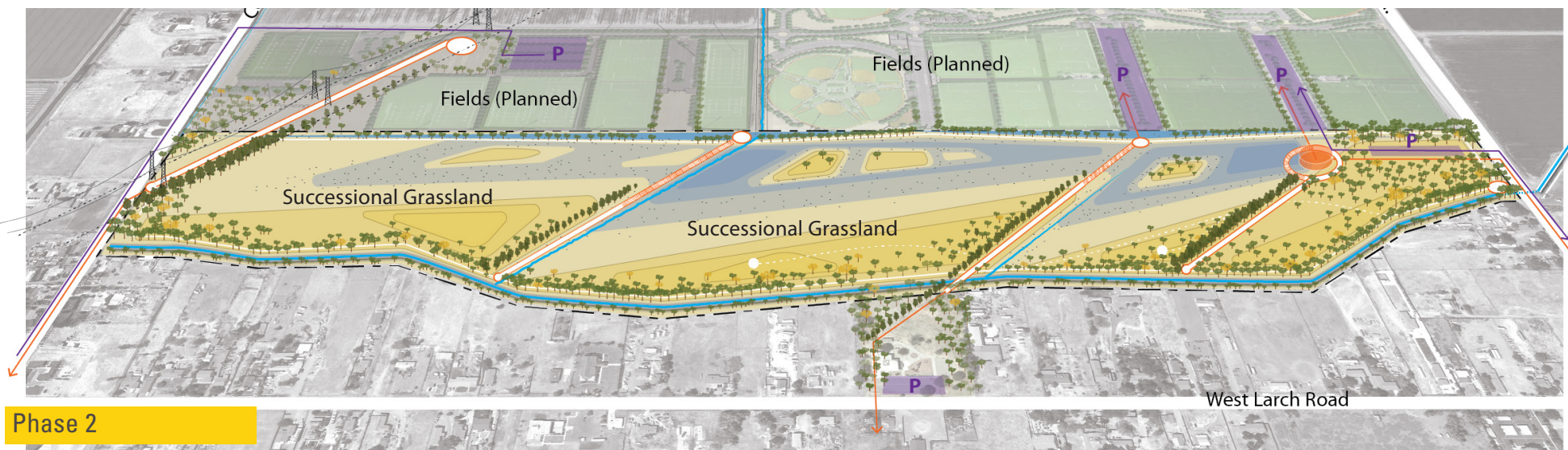
Expansion of actively managed native habitat zones

Interpretive Nature Center



West entry trail head done in conjunction with Legacy Fields expansion

Nature Park Facility with permanent restrooms, maintenance facility and educational components



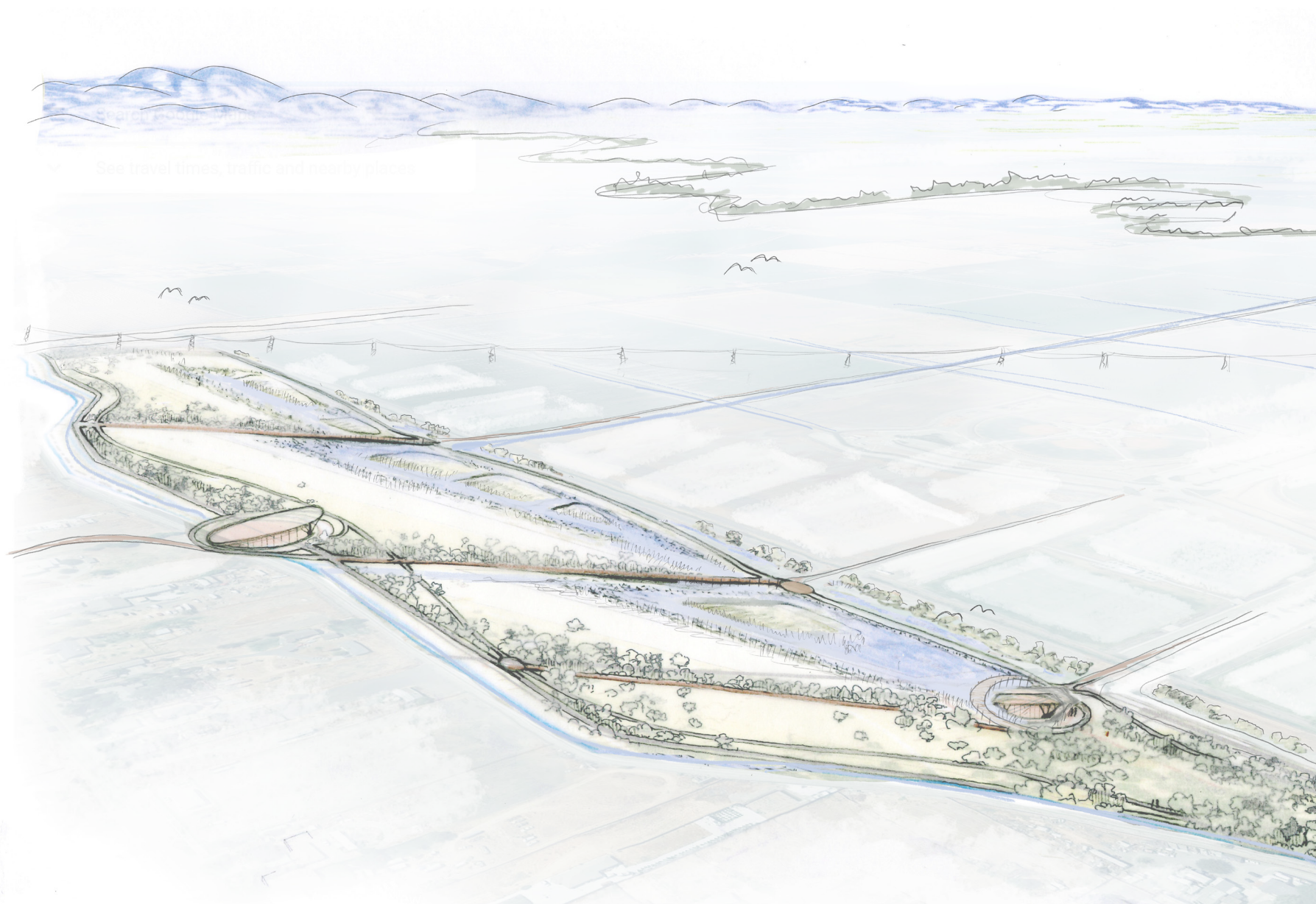


# THE SEED OF A LEGACY

Similar to its neighbor Legacy Fields, the establishment of Tracy Nature Park is a legacy of its own. Adoption of Tracy Nature Park Master Plan will be the “planting of a seed” for future generations of the Greater Tracy Community, and be a new home for hundreds of species in the greater delta ecosystem.

---





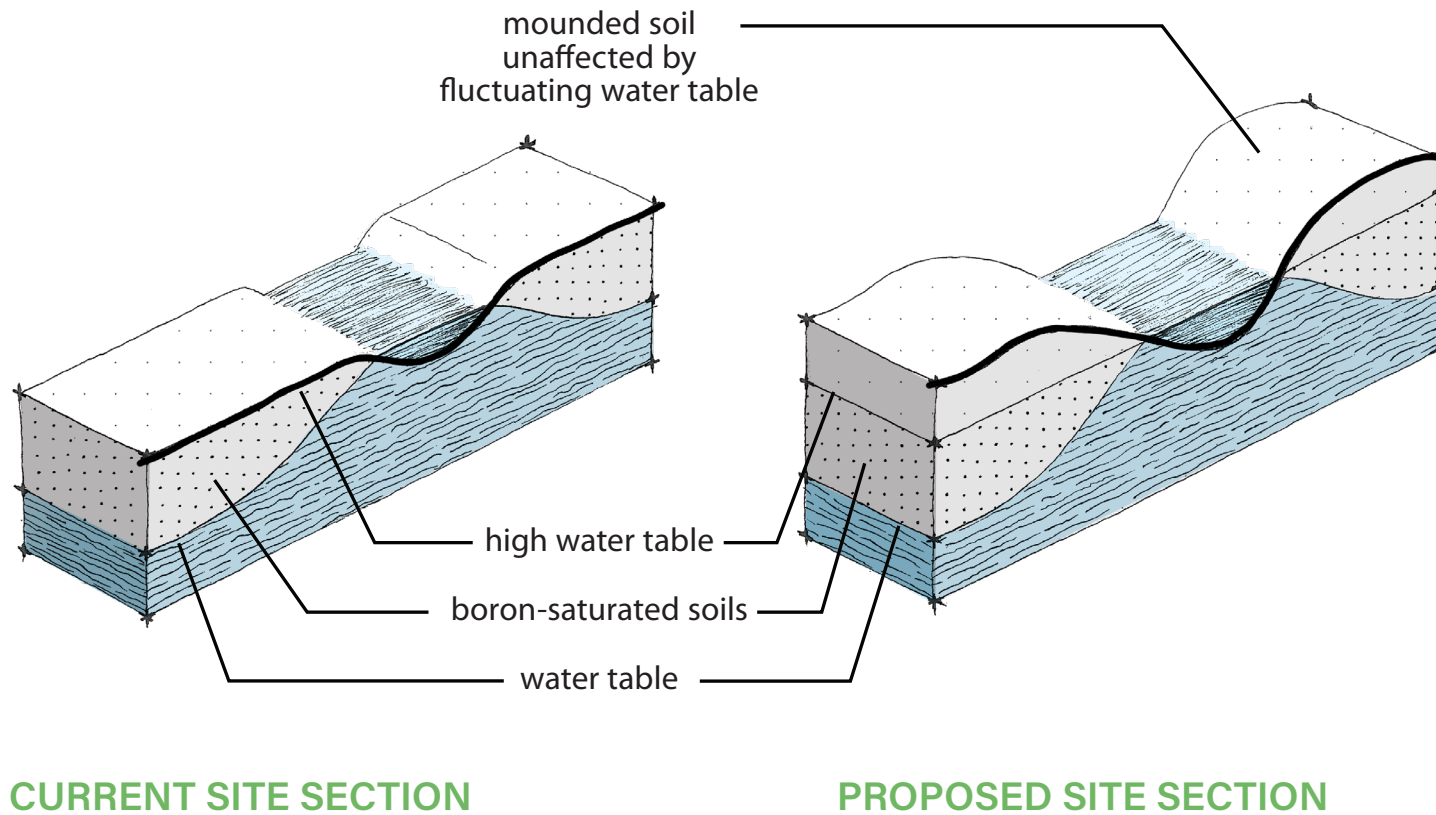
# APPENDIX A NEXT STEPS

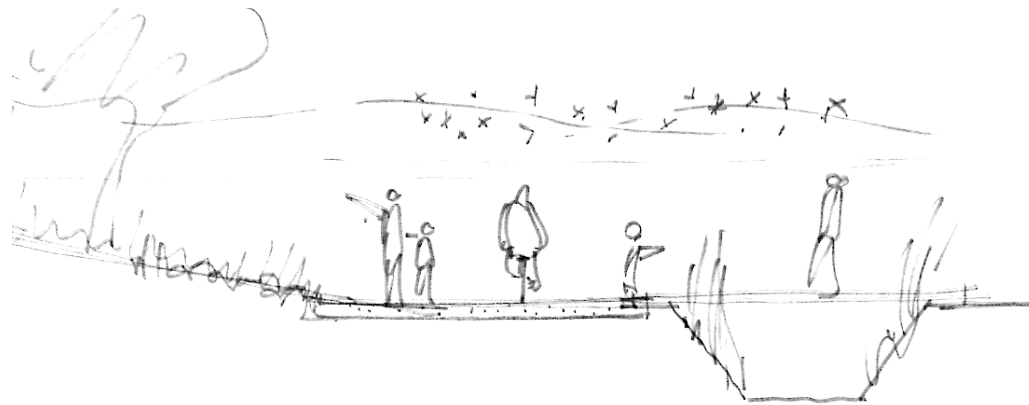
Upon acceptance by the community and adoption by the City Council several steps can be taken to as suggested below:

- cost estimate - for different phases
- establish potential connections and integration with Legacy Fields
- drafting of successional management plan for phase 0
- implementation of phase 0
- Identification of funding sources including grants and donors
- soil samples
- water samples
- hydrological analysis & engineering support of existing conditions and evaluation of master plan
- site easements & implications of design
- site survey including documentation of ruderal species that might provide insight into soil and hydrological conditions of the site
- traffic access study for phase 1 intersection at Tracy Blvd.
- opportunities for pedestrian access and integration with legacy fields
- partnership with Larch Clover community
- phase '0' planting plan
- community-driven tree planting to occur in locations not effected by future phases of earth moving

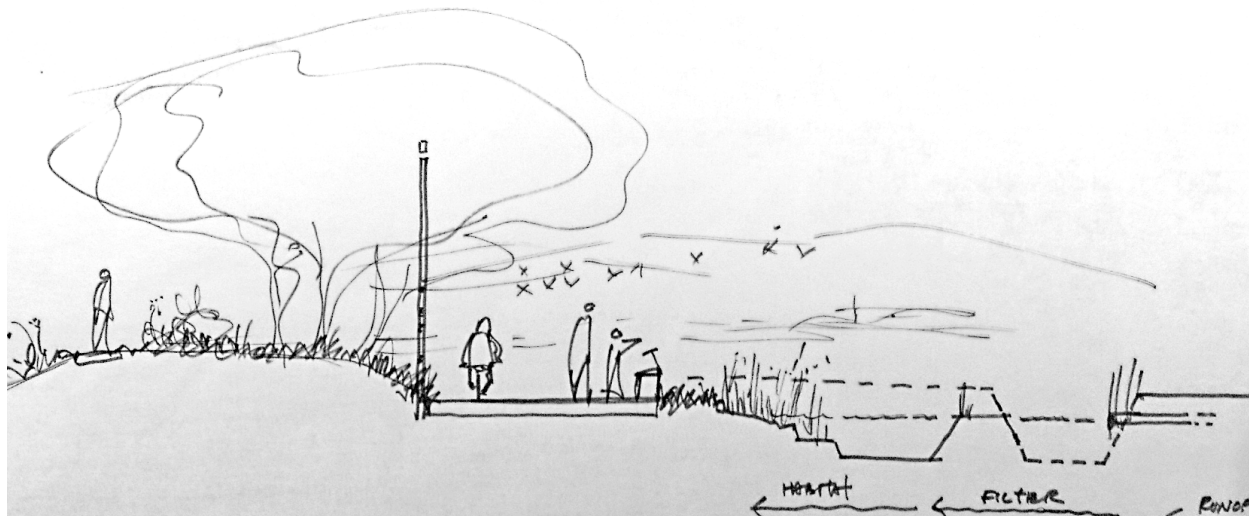


# APPENDIX B TOPOGRAPHY





**A - SECTION THROUGH IRRIGATION CHANNEL**



**B - SECTION THROUGH LEGACY FIELDS EDGE**



# APPENDIX C KICKOFF EVENT SUMMARY



## Tracy Nature Park Master Plan Kickoff | Event Summary

August 28, 2019, 5pm -7pm

Location: Southwest Soccer Field Shade Structure, Legacy Fields

### INTRODUCTION

The City of Tracy initiated the Tracy Nature Park master planning process with a community meeting held at Legacy Fields Sports Complex on the evening of August 28, 2019. Approximately 30 people attended for at least part of the program, which consisted of a presentation, a site visit, a group exercise, and the sharing of priorities and visions.

The meeting began with introductions of City Staff, the Consultant team, and stakeholders—many of whom have been active proponents of a nature park in Tracy. Peter Winch (WRT) and Brian MacDonald (City of Tracy) described the project and its background, including the relationship between the nature park and the citywide parks master plan update and why the Legacy Fields site was being considered. John Gibbs (WRT) reflected on the value of natural spaces and the various ways a nature park could be conceived of and created, sharing a range of examples. Several participants mentioned their own precedents: Bernal Community Park in Pleasanton, Audubon Canyon Ranch in the Marin Headlands, Wildcat Canyon Regional Park in Richmond, Woodward Park in Fresno, and Golden Gate Park in San Francisco. There was a discussion on how a nature park at this site, with its relatively flat topography, could be complemented by preserved open space at Tracy Hills, and about making a natural environment work at this location.

The group then took a walk out to the site, observing the irrigation pond and canal; hearing the wind and the sounds of the freeway and birds; and feeling the strong afternoon sun.

Returning to the picnic area, the group split into three smaller discussion groups to complete a series of activities designed to capture what elements people desired in a nature park, how those elements might be distributed on this site, and—perhaps most importantly—what their vision was for a nature park in Tracy. Representatives from each group then summarized these conversations and findings to the larger group. These are described below.





## MEMORANDUM

### GROUP ACTIVITIES

#### Group 1

**1 >Nature Park Elements | >Elementos del parque natural** Choose 5 elements that you would like to see in the future Tracy Nature Park. Place stars in the white bar on the image. Elige 5 elementos que te gustaría ver en el futuro Parque Natural de Tracy. Coloca estrellas en la barra blanca de la imagen.

Ecology	Recreation	Learning	Interaction
Pollinator Field / Demonstration Garden YES	Pollinator Field YES	Wet Meadow / Riparian Landscape YES	Oak Woodland TREES YES
Walking Trail YES	Adventure Play Area YES	Climbing Wall YES	Multi-use Active Trail ONLY PERIPHERAL
Outdoor Classroom YES	Bird watching NO PLATFORM (just rail apart) YES	Botanical Garden / Arboretum YES	Outdoor Theater YES
Native tour / Volunteer Opportunities YES	Community garden YES	Land Art / Habitat YES	Gathering and Contemplative Space YES

Your Ecology Ideas Here!  
**RECREATE ORIGINAL NATURAL HABITAT**

Your Recreation Ideas Here!  
**NO FRISBEE GOLF AND STUFF**  
**WALKING, HIKING YES**

Your Learning Ideas Here!

Your Interaction Ideas Here!

**TRACY NATURE PARK MASTER PLAN**

**2 >Nature Park Plan | >Plan de parque natural** Create a bubble diagram that organizes your group's top 5 features on the map using the colors in the legend. Crea un diagrama que organice las 5 características principales de su grupo en el mapa utilizando los colores de la leyenda.

Proposed Tracy Nature Park Site

Tracy Nature Park Site

Tracy Nature Park Site	Lincoln Park, Tracy	Rocky Hill Park, Tracy	Nickel Grove Park, Lind
Size: 85 acres Uses: Horse, Organic food, currently exists on site	Size: 14 acres Uses: Soccer, amphitheater, picnic, walking trail, playground, rose garden, library	Size: 27 acres Uses: Soccer, amphitheater, softball, baseball, tennis, etc.	Size: 130 acres Uses: Lake, Japanese garden, Nickel Grove Zoo, botanical garden, water play, picnic area, etc.

**3 >Describe Your Park | >Describe tu parque** As a group, come up with a description that captures the essence of your park. Como grupo, inventen una descripción que capture la esencia de su parque.

**PASSIVE, NATURAL, DRAW ON TRACY'S ECOLOGY, WATER, TREES, WILDLIFE.**

**TRACY NATURE PARK MASTER PLAN**



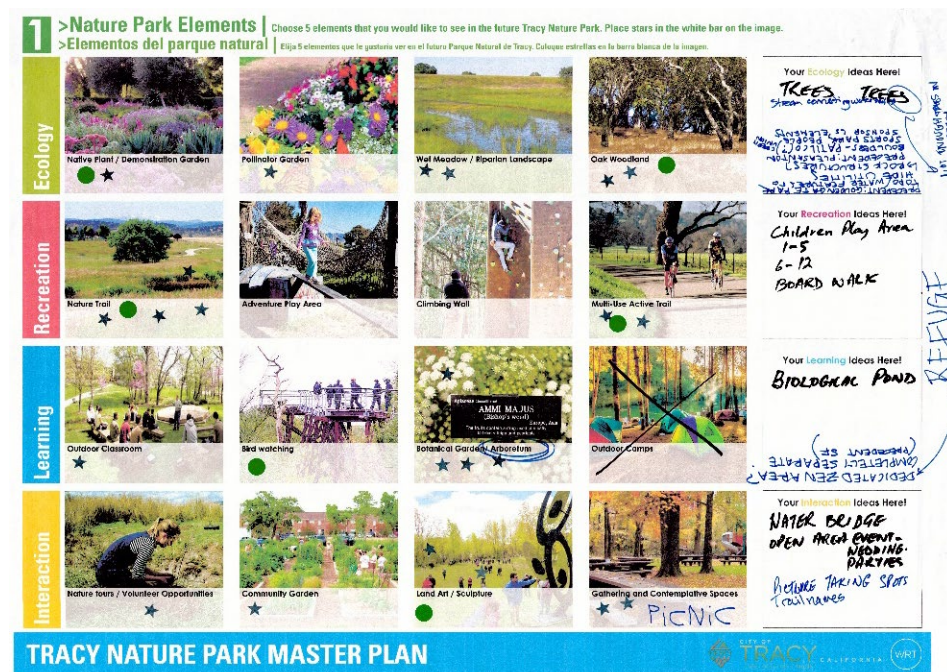
Group 2

[illegible]



## MEMORANDUM

### Group 3



### SUMMARY

#### Group 1: *Passive, Natural Environment*

Group 1 indicated a strong priority for the creation or restoration of a natural landscape and vegetation on the site, that could include oak woodlands, native plants, and wet meadow / riparian areas. People would be given opportunities to experience the site using a multiuse trail along the perimeter and walking trails in the site's interior. The group also supported the inclusion of restrooms at the site entrance, but was otherwise opposed to more developed visitor elements or active recreation features. Group 1 described their nature park as "passive, natural, draw[ing] on Tracy's ecology, water, trees, and wildlife."

#### Group 2: *Restoration, Recreation and Learning*

Group 2 favored an environment featuring oak woodlands, native plants, and wet meadow/ riparian landscape. This group also suggested the inclusion of berms that would shield





## MEMORANDUM

visitors in the park from wind and sun and from the sights and sounds of traffic and recreation. The park would create a sheltered experience within the landscape.

Group 2's nature park would support recreation, learning, and interaction centered on the outdoor environment. The park could create opportunities for hiking, cycling, and horseback riding; classes and tours; and educational signage for wildlife, bird watching, and historical information.

When asked to describe their park, representatives of Group 2 proposed that restoration of a natural environment should be the first phase. After natural qualities were reestablished, recreational use could begin.

### ***Group 3: Natural Refuge and Place of Beauty***

Group 3 prioritized trees, which would be the means to create new types of spaces not otherwise found in Tracy. Group 3 envisioned working with the site's winter wet areas and the irrigation pond, creating new waterways across the site and a naturalized pond that supports life. The park could include boardwalks, allowing people to interact intimately with the landscape, and educational signage. Group 3 saw the potential for a natural setting to be a valuable backdrop for events, photos, and art installations. The essence of the park would be a Zen-like refuge, giving people in Tracy a place to interact with nature and solitude in a way that is currently lacking.

## CONCLUSION / NEXT STEPS

Nature park stakeholders were enthusiastic about natural elements, especially oak woodlands and wet meadow / riparian landscape. Participants expressed that the park should be low maintenance in order to ensure long term success.

Stakeholders agreed that nature trails were essential to allow people to enjoy the site. The ideas of nature tours and volunteering were received positively. Participants generally felt that Tracy already provides sufficient active recreational programming for children and youth, and did not see a role for that in the nature park. Participants were excited to see progress in realizing a nature park for Tracy.

# APPENDIX D SITE ANALYSIS REPORT





## Tracy Nature Park Site Evaluation | Findings

### INTRODUCTION

WRT was hired by the City of Tracy to define a vision for a nature park. Site Evaluation was conducted through site visits to remnant wetland ecosystems along the Old River just 3 miles from the potential Tracy Nature Park site. Additionally, notes and observations were made from walking the site and documenting adjacencies such as Legacy Fields to the north, Larch Clover to the south, and flooded agricultural fields to the northwest. LSA provided initial ecological analysis through dialogue with WRT. Research was conducted on the evolution of the landscape from the early 1800's delta ecosystem to its present-day condition of channelized canals and agricultural fields.

### EVOLUTION OF AN ECOSYSTEM

Prior to the channelization of the delta for agricultural purposes, the site of the potential Tracy Nature Park was adjacent to several ecosystems including grasslands, tidal freshwater wetland, non-tidal freshwater wetland and seasonal wetland. This is also reflected in the fact that the average elevation of the site is just 3' above sea level.



Habitat complexity of the South Delta. by artists and naturalist Laura Cunningham

### ADJACENT ECOLOGIES

Just 3 miles from the future site of Tracy Nature Park, just north of where Tracy Boulevard crosses the Old River, is Sam's Market. Behind Sam's Market is an informal fishing hole



## MEMORANDUM

which provides a lush riparian environment publicly accessible. While only 3 miles from the site of Tracy Nature Park, the lack of a dedicated bike lane, or walking trail makes a bike ride or hike hostile next to the fast-moving traffic. A separated multi-use hiking/biking path would make for a nice future connection to Tracy Nature Park and a citywide network of parks and trails.



Photo of native Oak stand on an island of the Old River just a few miles from Tracy Nature Park. Photo by WRT



Fishing hole on the Old River Photo by WRT



Tule, willow, lady fern, dogwood, bur reed and Sagittaria





## MEMORANDUM



At the north-west edge of the site a flooded agricultural field provides habitat for several species of birds. Photo by WRT

### NATURE PARK TODAY

While the site of the potential Tracy Nature Park can feel barren today, a walk around the open field reveals that life is present.



A panorama of the site from North Tracy Bouvard Photo by WRT

Current tenants of Nature Park emerged from the agricultural ditches on the periphery of the site. A white heron was seen amongst a flock of birds in the flooded agricultural field just to the north-west of the site. In the distance a hum of noise could be heard from the site as it appeared hundreds of birds were feeding in the adjacent field. It should be noted that though adjacent sites are agricultural in nature does not exclude them from providing habitat for an array of species.

A river otter was encountered in commute between 2 ditches in the center of the Nature Park. As he seen humans approaching, he quickly turned back to his original ditch and swam quickly away. In addition to the river otter, and heron several birds were observed in the area including:

Canada goose (*Branta canadensis*)





## MEMORANDUM

green heron (*Butorides virescens*)

American coot (*Fulica americana*)

killdeer (*Charadrius vociferus*)

American crow (*Corvus brachyrhynchos*)

Eurasian collared dove (*Streptopelia decaocto*)

northern mockingbird (*Mimus polyglottos*)

house finch (*Haemorhous mexicanus*)

lesser goldfinch (*Spinus psaltria*)



Hank the Heron – Photo by WRT



Rosie the River Otter – Photo by WRT

In addition to Hank and Rosie, Nature Park might provide home to several other residents. LSA Environmental Consultants thought the following species might have a chance to one day call Nature Park Home:

Swanson's Hawk - *Buteo swainsoni*

Burrowing Owl - *Athene cunicularia*

Mallard - *Anas platyrhynchos*

Snowy Egret - *Egretta thula*



## MEMORANDUM

Pacific tree frog - *Hyla regilla*

River Otter – *Lontra canadensis*

Great egret – *Ardea alba*



Burrowing Owl - *Athene cunicularia*



Northern Pacific Treefrog - *Hyla regilla*

While the site of Tracy Nature Park provides an opportunity to be home to a range of species, the human/nature interface will be important to ensure species do not feel threatened to the proximity of humans. LSA Environmental Consultants suggested buffer distances ranging from 50'-300' depending on the species. As the site is 5,000'x800' there should be ample space to provide both walking paths and several habitat zones within the site. A question for the community will be determining a balance between space for humans and space for habitat.

### RESPONSE TO TRACY NATURE PARK PROJECT KICKOFF August 28, 2019

#### Group 1: *Passive, Natural Environment*

Group 1 indicated a strong priority for the creation or restoration of a natural landscape and vegetation on the site, that could include oak woodlands, native plants, and wet meadow / riparian areas. People would be given opportunities to experience the site using a multiuse trail along the perimeter and walking trails in the site's interior. The group also supported the inclusion of restrooms at the site entrance but was otherwise opposed



## MEMORANDUM

to more developed visitor elements or active recreation features. Group 1 described their nature park as “passive, natural, draw[ing] on Tracy’s ecology, water, trees, and wildlife.”

**Response:** Having zones of more developed program at the entrance would leave much of the remaining park open to habitat. An important question to be answered will be the exact number and locations of entrances to the park. Through analysis, it was envisioned the park might want to provide a primary entrance along North Tracy Boulevard, with additional access at Legacy Fields, Clover Larch Community Center, and Corral Hollow Road.

### **Group 2: *Restoration, Recreation and Learning***

Group 2 favored an environment featuring oak woodlands, native plants, and wet meadow/riparian landscape. This group also suggested the inclusion of berms that would shield visitors in the park from wind and sun and from the sights and sounds of traffic and recreation. The park would create a sheltered experience within the landscape.

Group 2’s nature park would support recreation, learning, and interaction centered on the outdoor environment. The park could create opportunities for hiking, cycling, and horseback riding; classes and tours; and educational signage for wildlife, bird watching, and historical information.

When asked to describe their park, representatives of Group 2 proposed that restoration of a natural environment should be the first phase. After natural qualities were re-established, recreational use could begin.

**Response:** The site visit confirmed the quality of the open expanse of the site. Sounds far in the distance could be heard such as barking dogs, traffic, and birds. While the expansive of the site can be amenity for views, it will be important to provide areas of quiet and calm refuge. It was noticed that sitting just a few feet lower in the fields was a feeling of enclosure and protection from the wind and sound. The utilization of berms and subtle topography changes would provide for zones of refuge contributing to a greater variety of environments for the site.

If a more active path is to be defined on the site, it will be important to position it in a way that provides buffer for important habitat zones as defined above. While education was important to group two the edge of these buffer zones might want to provide vistas where the habitat could be observed from a distance.

A phased approach will be important to the success of the Nature Park. While ecosystems require time to move through various states of succession, human activities might evolve in parallel with the ecosystem to ensure they are not detrimental to the success of the Nature Park.





## MEMORANDUM

### **Group 3: *Natural Refuge and Place of Beauty***

Group 3 prioritized trees, which would be the means to create new types of spaces not otherwise found in Tracy. Group 3 envisioned working with the site's winter wet areas and the irrigation pond, creating new waterways across the site and a naturalized pond that supports life. The park could include boardwalks, allowing people to interact intimately with the landscape, and educational signage. Group 3 saw the potential for a natural setting to be a valuable backdrop for events, photos, and art installations. The essence of the park would be a Zen-like refuge, giving people in Tracy a place to interact with nature and solitude in a way that is currently lacking.

**Response:** While a broad range of trees are possible for the site much of the native oak stands along the Old River would take decades to reach maturity. Other tree species such as willows, cottonwood, elderberry, and eucalyptus would be faster growing, providing enclosure and habitat in a shorter amount of time. While native plants might want to be prioritized for the Nature Park Site, certain exotics might be more appropriate if they are faster growing, provide habitat, require less maintenance and do not pose risk of being invasive or fire prone.

The existing irrigation pond provides an opportunity for habitat and a meditative experience. The exact function and anticipated future of the irrigation pond should be studied in order to understand if it can become a permanent fixture of the Nature Park, and to what degree of adaptability might allow it to evolve.

### **CONCLUSION / NEXT STEPS**

Site analysis provided promising results as the presence of life was found to exist around all edges of the site. The native riparian habitat along the Old River provides a sample of what might one day be able to exist in the Nature Park. Challenges were identified such as the exposure to wind, sounds, and light pollution (from adjacent Legacy Fields).

Uncertainties such as the hydrology of the site will need to be better understood in order to better predict the success of certain habitats. This might require the consultation of a hydrologist. Additionally, access to Nature Park will be a challenge given its location on the periphery of town. This will continue to be studied as it relates to the future of the Tracy Parks Master Plan. Potential future connections with the extension of Lincoln Blvd will be considered as well as mapping potential future multiuse routes to the Old River. Tracy Nature Park has potential to evolve into a rich natural environment unique to the cultural ecology of the south delta, and provide a place of refuge for animals and humans alike.



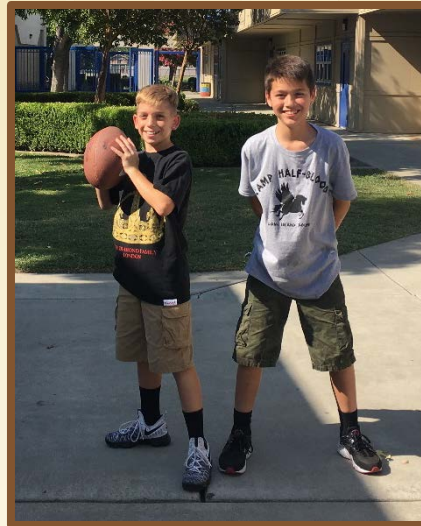
## MEMORANDUM



Site Analysis Diagram of Tracy Nature Park - WRT



# YOUTH & TEENS REPORT 2019-2020





# AFTER SCHOOL PROGRAM

- ▶ Louis Bohn (K-5<sup>th</sup>)
- ▶ Poet Christian (K-8<sup>th</sup>)
- ▶ Wanda Hirsch (K-5<sup>th</sup>)

Minute to Win it Games



Yarn Snowball Fight



Outside Playtime



# AFTER SCHOOL PROGRAM

**Louis Bohn**  
**Registered - 21**

	Average 2018-19	Average 2019-20
Monthly	7	9
Hourly	3	8
Daily	1	1

**Wanda Hirsch**  
**Registered - 24**

	Average 2018-19	Average 2019-20
Monthly	16	12
Hourly	6	4
Daily	2	4

**Poet Christian**  
**Registered - 33**

	Average 2018-19	Average 2019-20
Monthly	8	11
Hourly	12	15
Daily	3	6



**Cost: Monthly - \$200 Resident Disc./\$220 Cost      Hourly - \$115 Resident Disc./\$127 Cost**  
**Daily - \$20 Resident Disc./\$22 Cost**



# STUDENTS ADDING FUN TO EDUCATION

## S.A.F.E. Program

- Homework help
- Art
- Fitness
- Recreation games
- Computer Access
- Guest Speakers



Cost Per Year:

\$100 Resident-Disc

\$110 Cost



# Summer Camps 2019

- Girl Talk
- Creative Space
- Siblings Watching Siblings
  - Ready, Set, Bake
- So, You Think You Can Cook



# Summer Camps

	Summer 2018	Summer 2019	Resident Disc.	Cost
Girl Talk	22 Offered 2x	10 Offered 2x 1 held	\$70	\$77
Ready, Set, Bake	27 + 6 waitlist Offered 2x	40 Offered 3x	\$70	\$77
So, You Think You Can Cook	24 + 14 waitlist Offered 2x	40 Offered 3x	\$70	\$77
Siblings Watching Siblings	17 Offered 2x	8 Offered 2x 1 held	\$70	\$77
Creative Space	N/A	16 Offered 1x	\$70	\$77

\*All teen camps are led by recreation staff

# What's New for 2020

- Additional
  - Cooking
  - Baking
  - Creative Space
- Increased fee per camp \$80





# MARKETING EFFORTS



**S.A.F.E.**  
**(Students Adding Fun to Education)**

Students Adding Fun to Education (S.A.F.E.) is a great way for your teen to do something creative and fun after school. The afterschool program enhances their social skills, increase physical fitness and offers new things to learn in a fun and safe environment. S.A.F.E. incorporates tutoring assistance, recreational activities, leadership components, arts elements, and much more.

Available at the following school site:  
Williams Middle School  
Room #19

Fees:	Reg. Disc.	Cost
Annually	\$100	\$110

For more information please call (209) 831-6202

Parks & Recreation Department  
715 N. Central Avenue, Tracy, Ca 95376  
(209) 831-6202  
*Creating Community through People, Parks and Programs*



# THANK YOU!



Recreation Division Report  
Quarterly Senior Update  
2-19-2020 Revised

## Comments from Senior Center Comment Box

Date	Concern/Comment	Status	How often do you visit?
11/22/2019	No Concerns/Comments		
11/29/2019	No Concerns/Comments		
12/6/2019	No Concerns/Comments		
12/13/2019	No Concerns/Comments		
12/20/2019	No Concerns/Comments		
12/27/2019	No Concerns/Comments		
1/3/2020	No Concerns/Comments		
1/10/2020	Please lead Ballroom Dancing.	<b>Anonymous submission.</b> In 2016, the Senior Center offered Ballroom Dancing. However, due to scheduling conflicts with the volunteer instructors, the class was canceled. Staff will again research potential contractors or volunteers to teach a class.	
1/17/2020	No Concerns/Comments		
1/24/2020	No Concerns/Comments		
1/31/2020	People having a bad cough, please stay home.	<b>Anonymous submission.</b>	
2/7/2020	No Concerns/Comments		
2/14/2020	No Concerns/Comments		
2/21/2020	No Concerns/Comments		

\*\*Comment boxes are checked every Friday

**\*\*Parks Commission Updates: March, June, September & December\*\***

Beginning September 19, 2014, the Lolly Hansen Senior Center began documenting comments/concerns that participants submitted. Over the past sixty-four months, 186 seniors have submitted their comments/concerns. The staff at the Senior Center reviews each submission and then notifies each person of what steps will be taken (if needed). The seniors have had a positive response to the process and enjoy seeing comments/concerns being documented.

\*\*Please note comments have been summarized and the original comment cards are available at the Senior Center.